

Michel Paradis

Mc Gill University

BILINGUAL APHASIA TEST

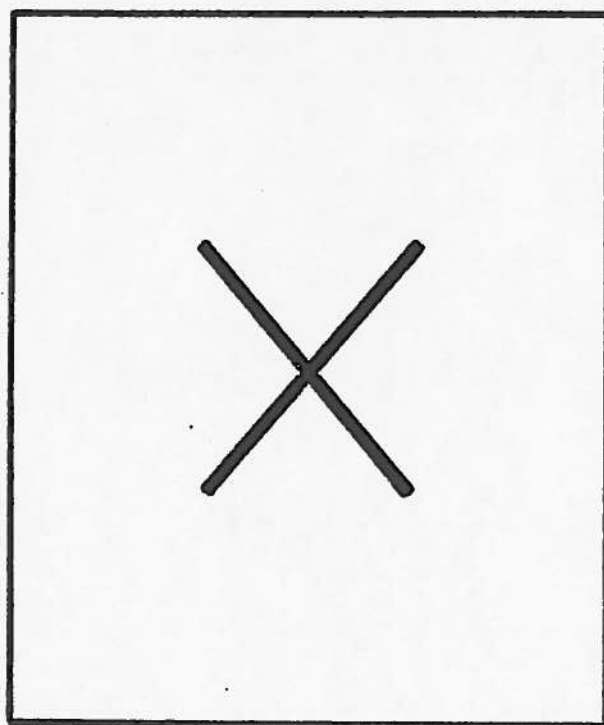
(LUO VERSION)

STIMULUS BOOK

DHOLUO

The development of the Bilingual Aphasia Test materials was supported by Grant MEQ 01-07-k (1976-1983) from the Quebec Ministry of Intergovernmental Affairs, Grant EQ 1660 (1980-1985) from the Quebec Ministry of Education FCAC Fund, and Grants 410-83-1028 (1984, 1985) and 410-88-0821 (1989-1991) from the Social Sciences and Humanities Research Council of Canada.

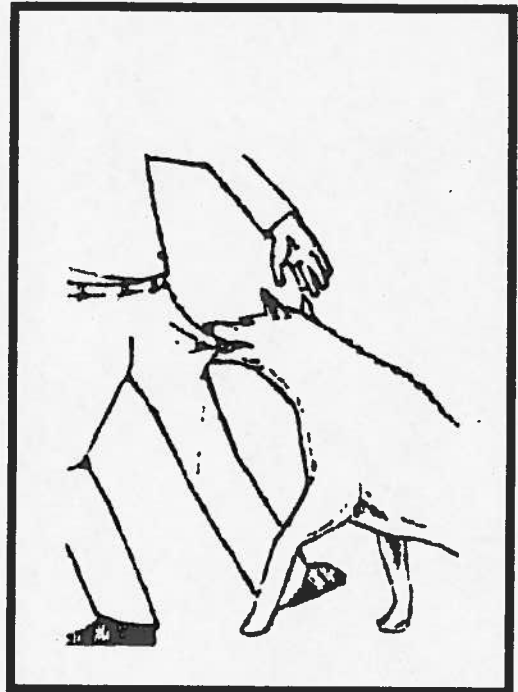
**NYALO MAR NG'EYO GI POGO WECHE
MACHAL**



1



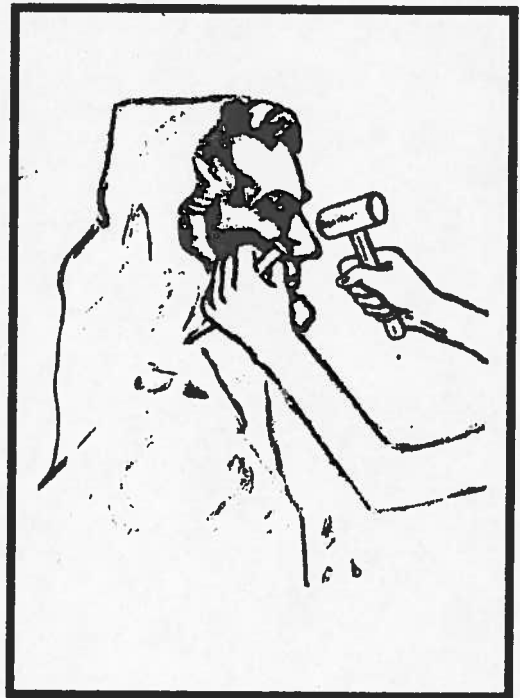
2



3

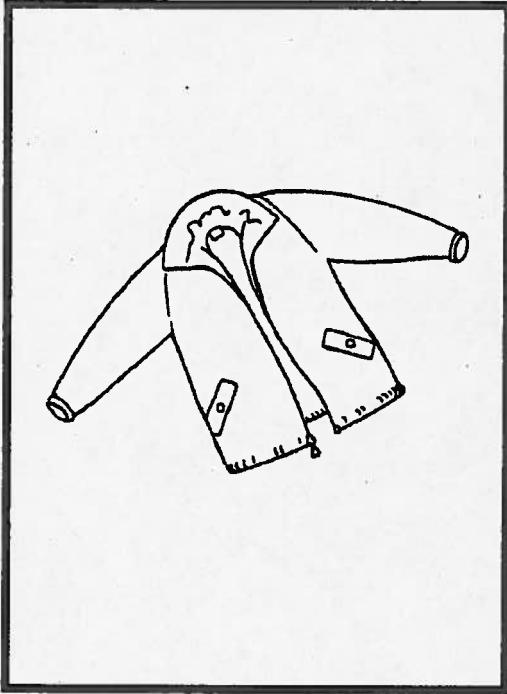


4



Mfwano

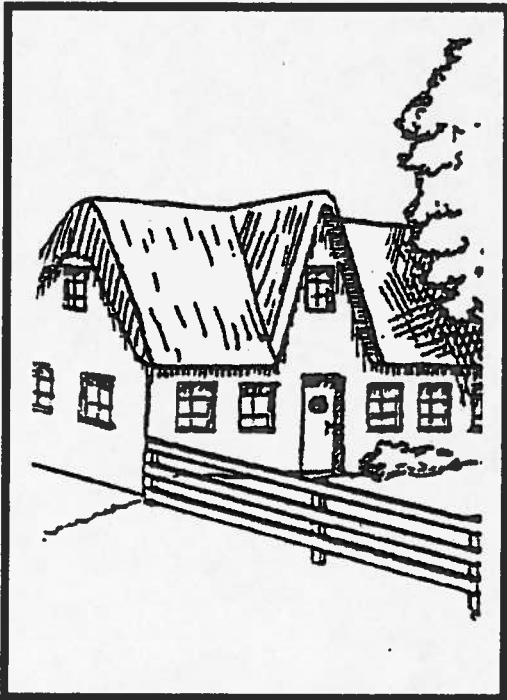
1



2

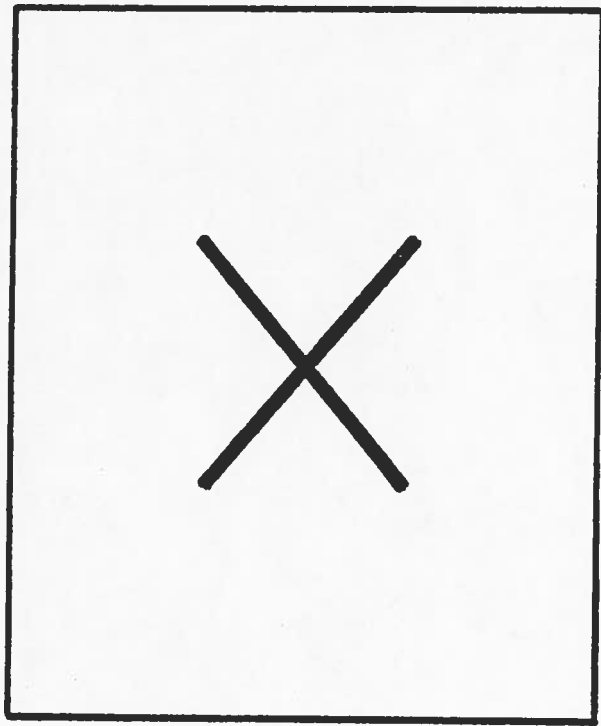


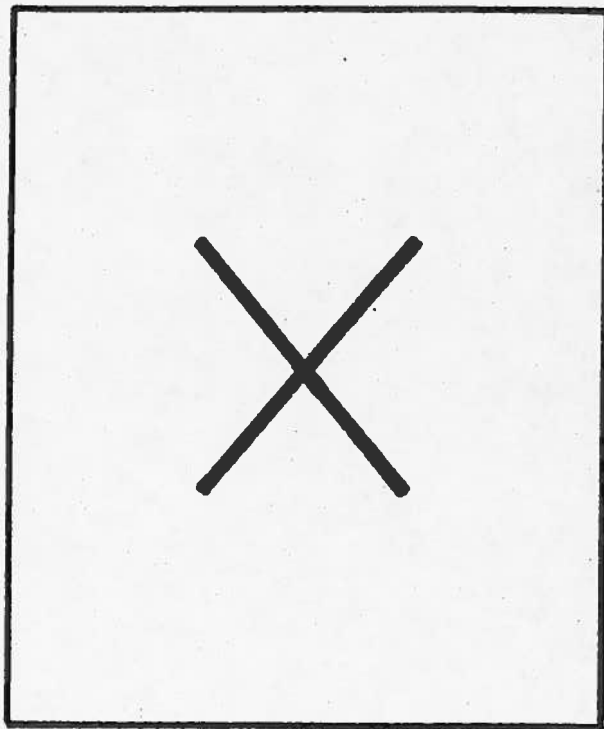
3



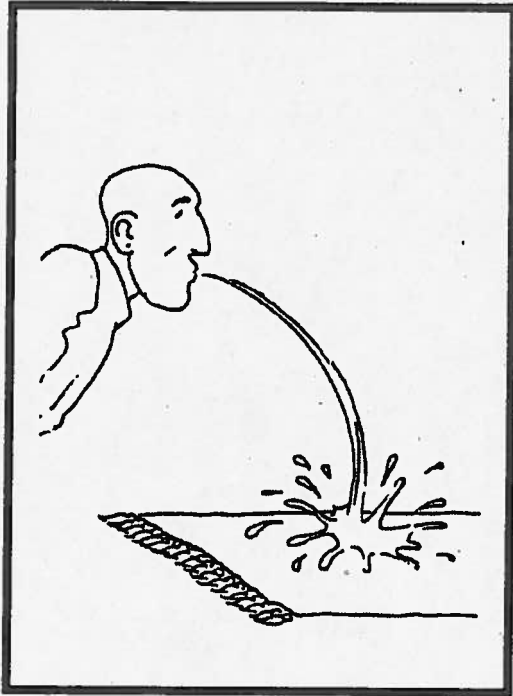
4







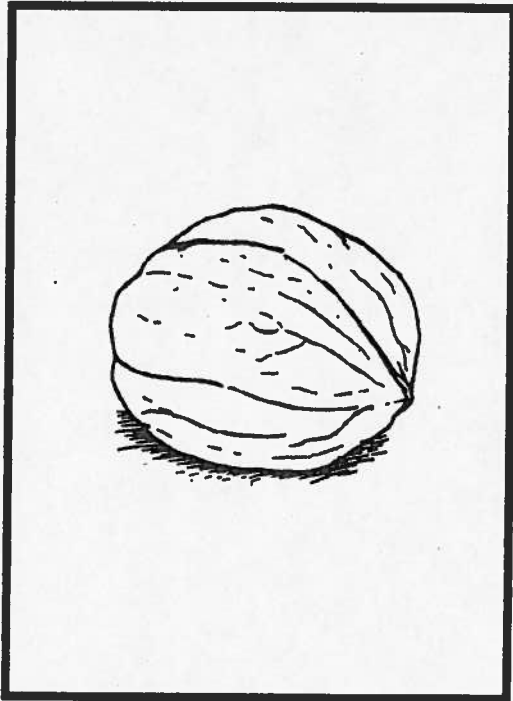
1



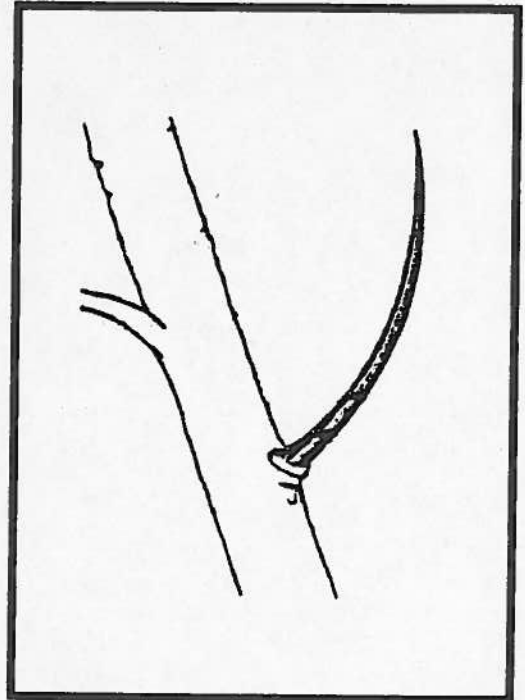
2

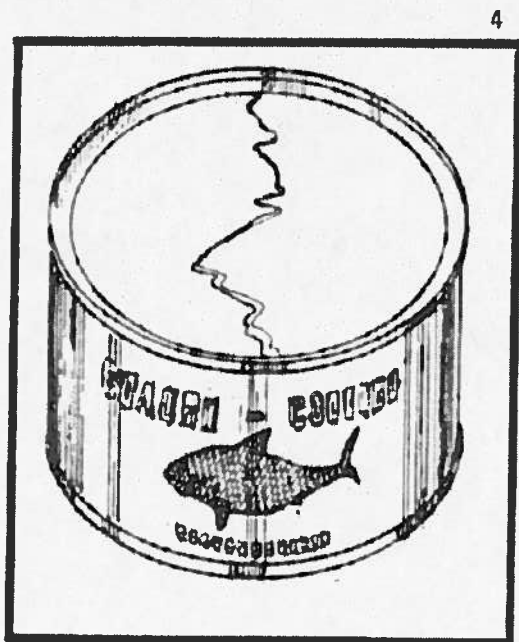
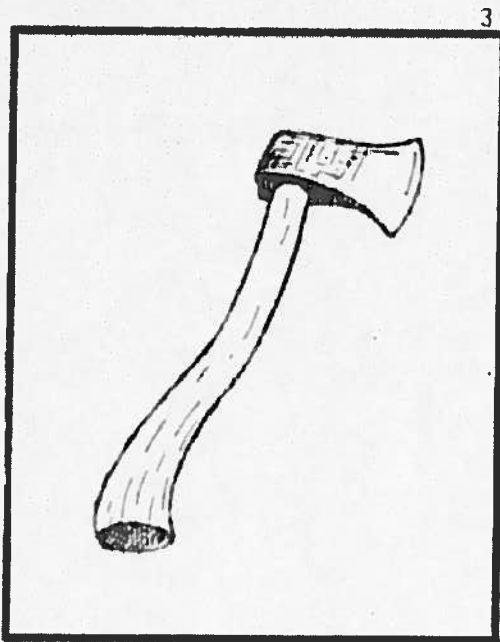
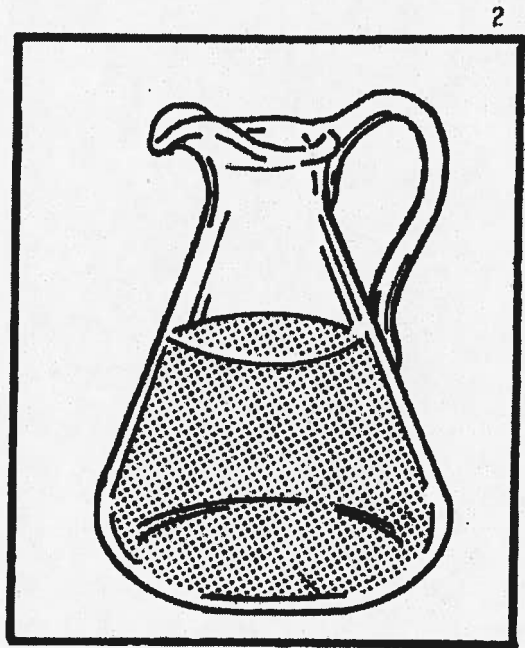
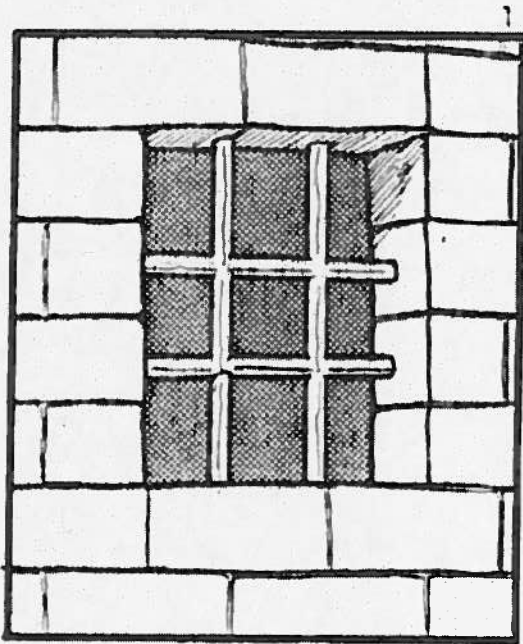


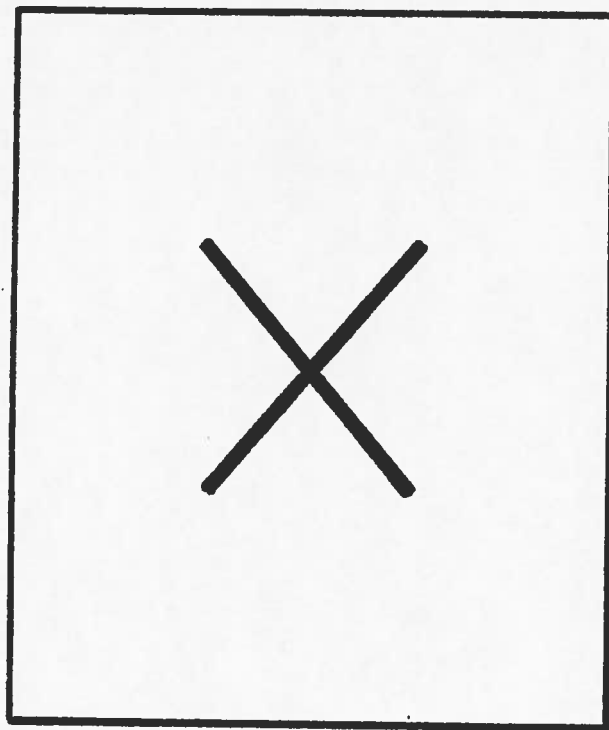
3

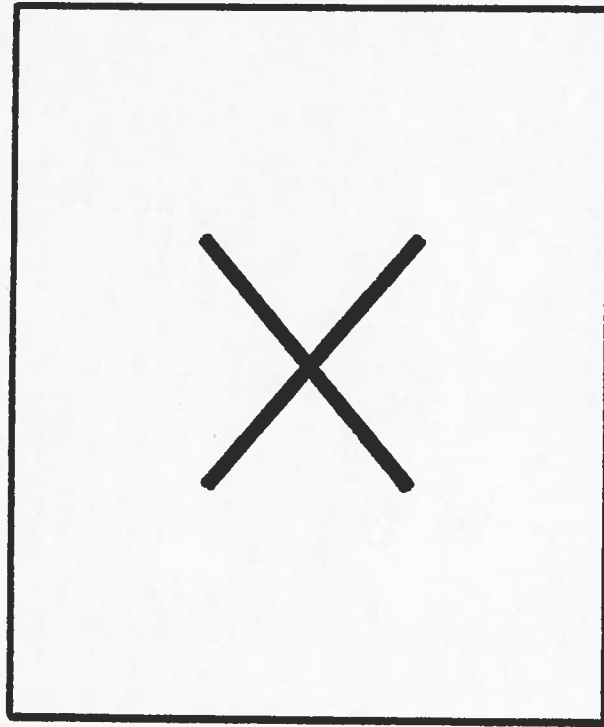


4

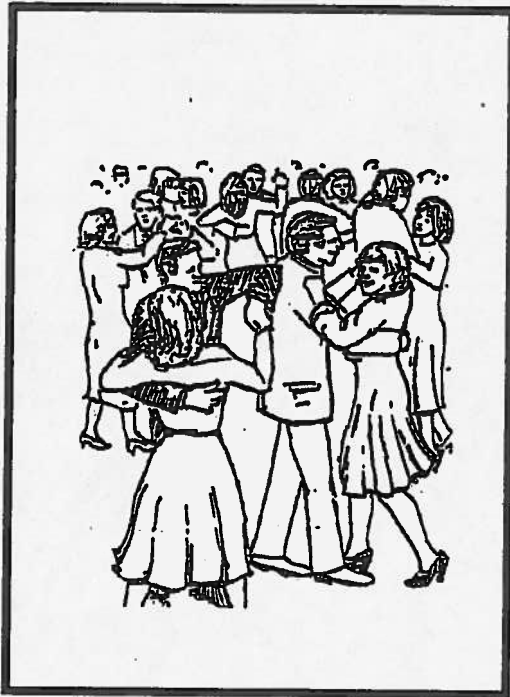








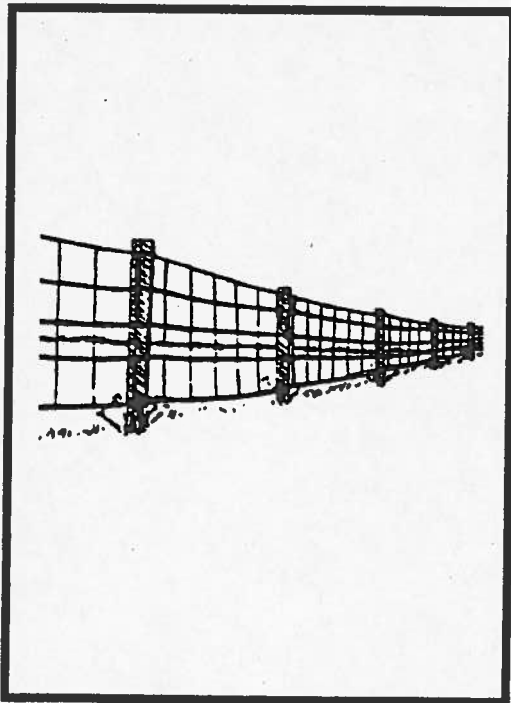
1



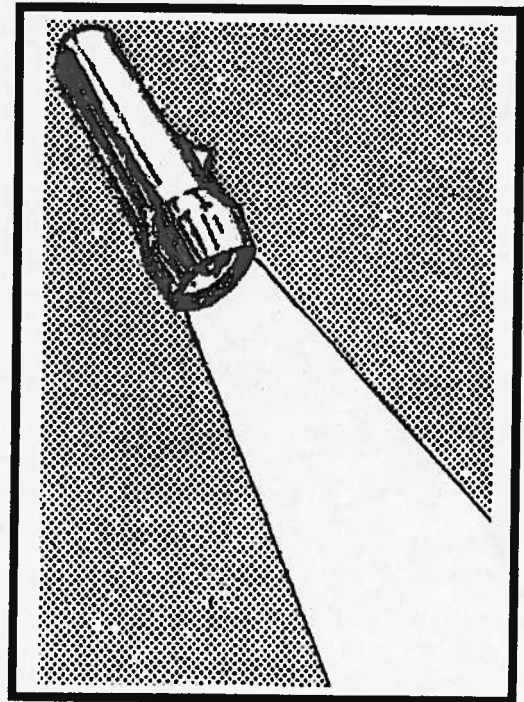
2



3



4



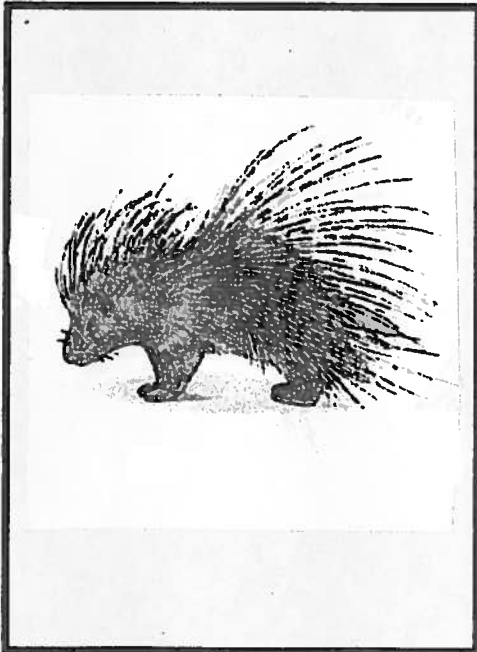
1



2

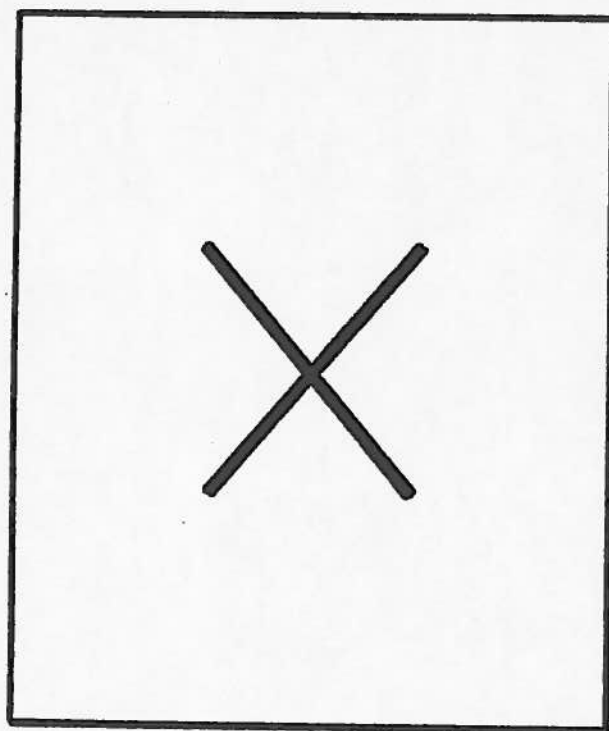


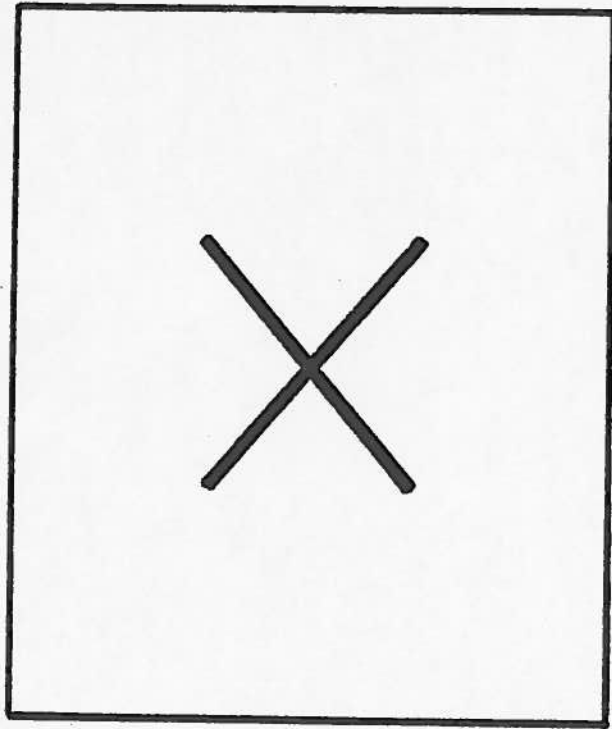
3



4



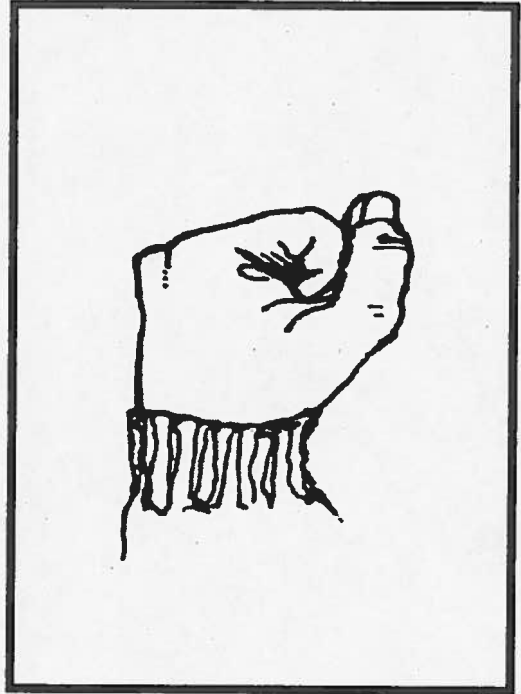




1



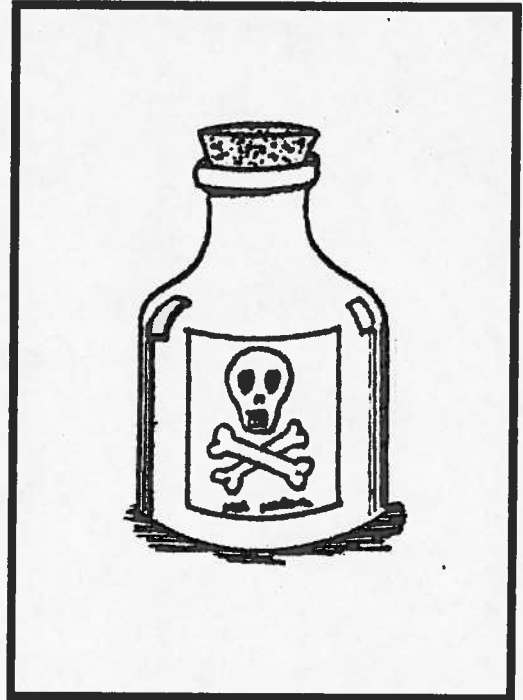
2



3



4



1



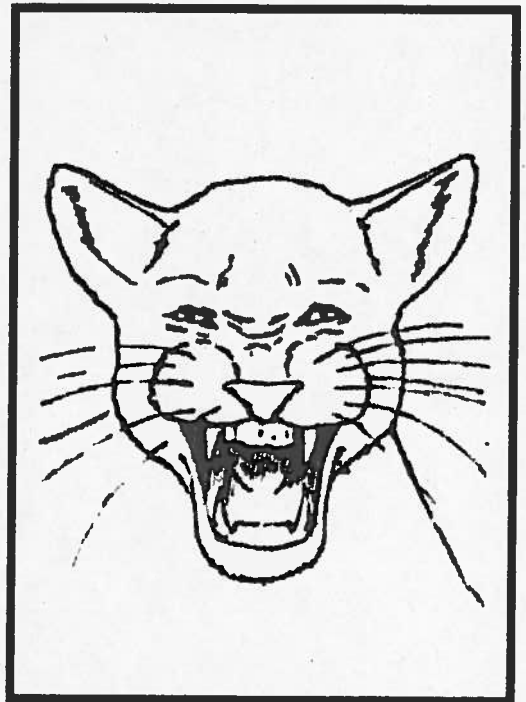
2

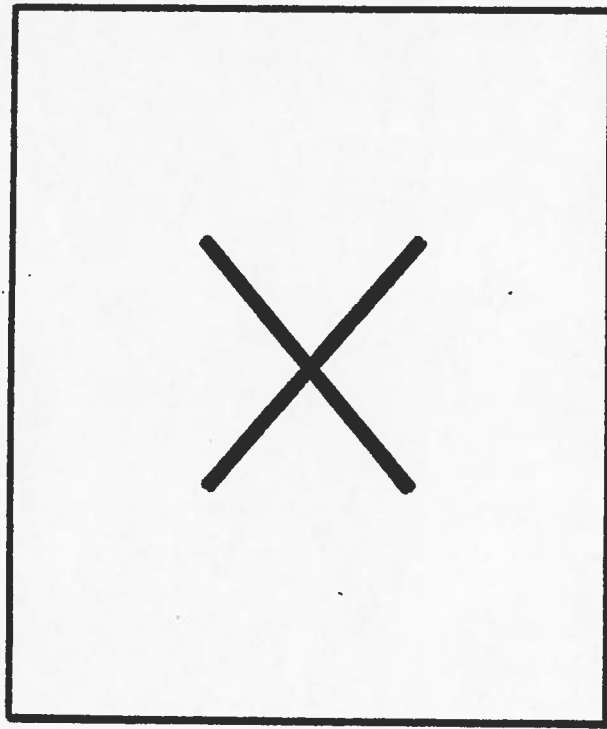


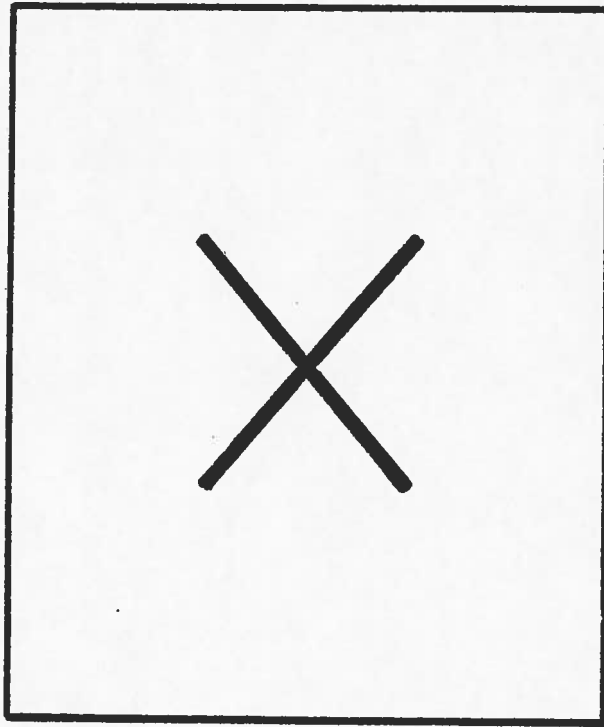
3



4



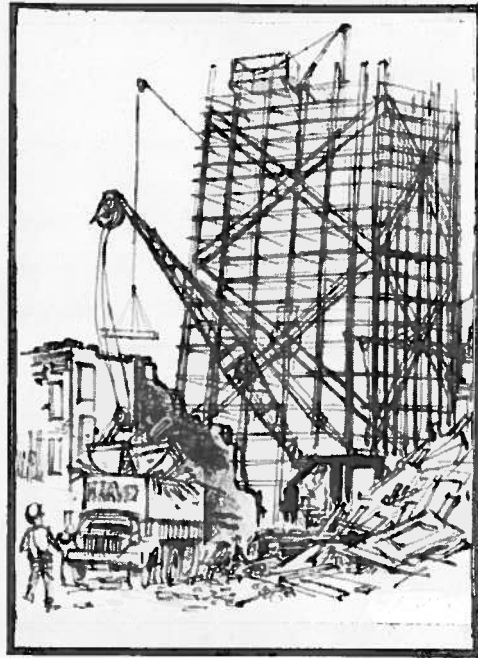




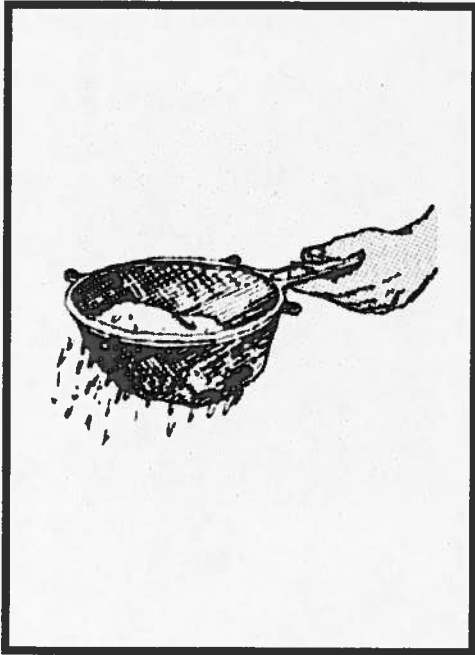
1



2



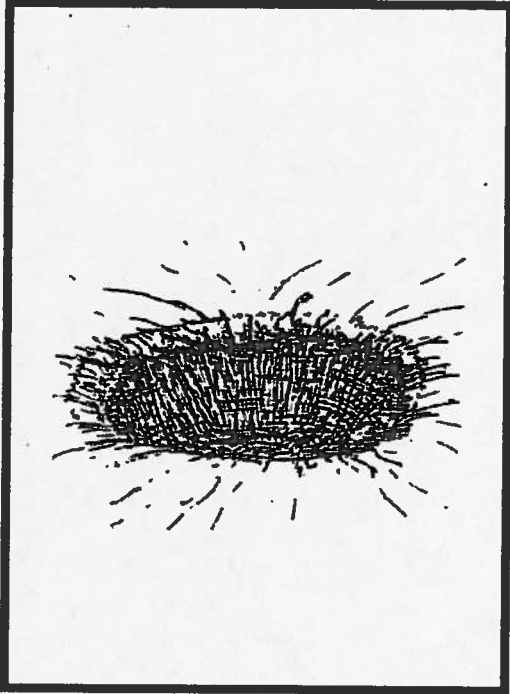
3



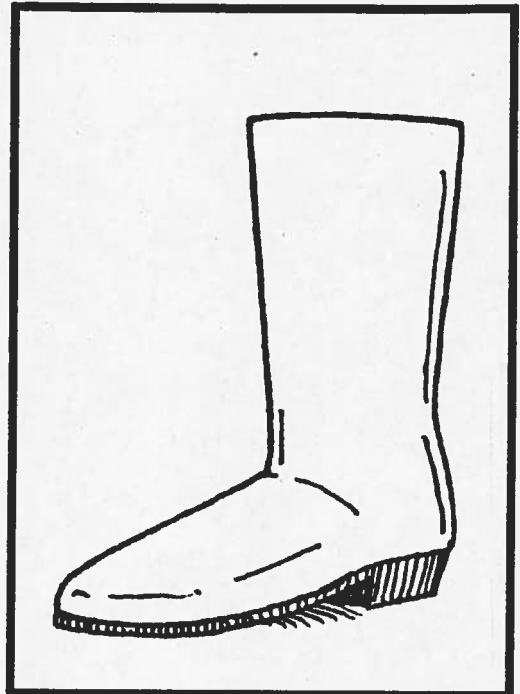
4



1



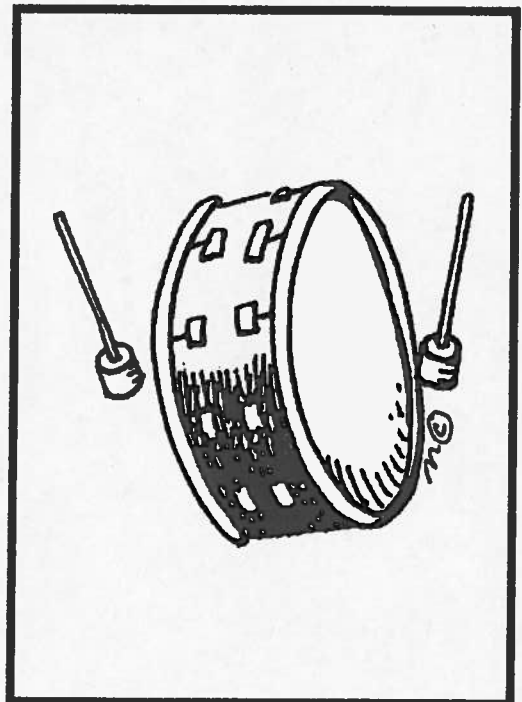
2

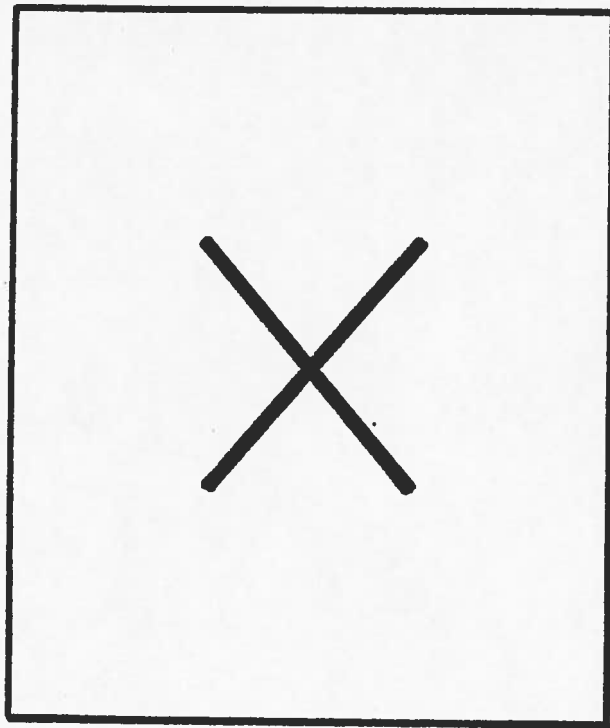


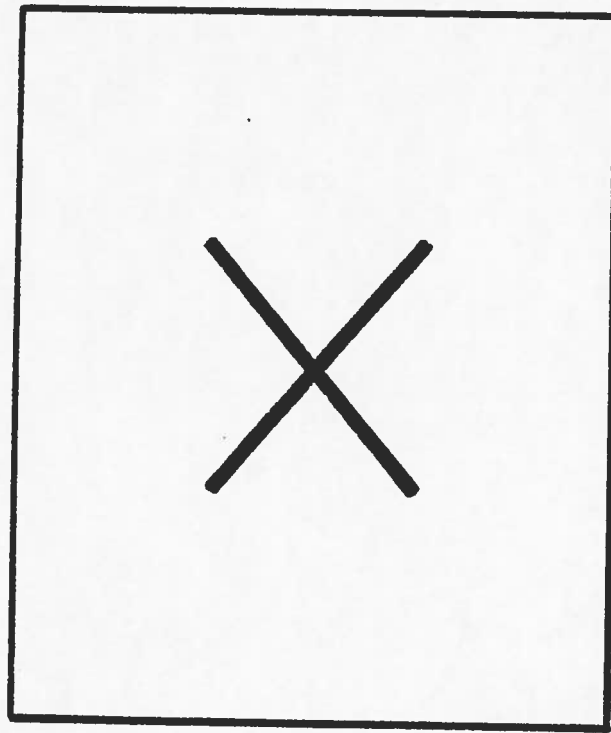
3

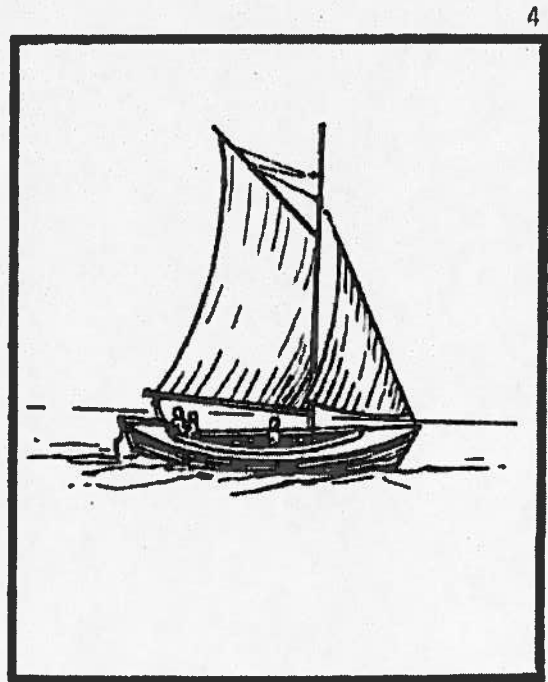
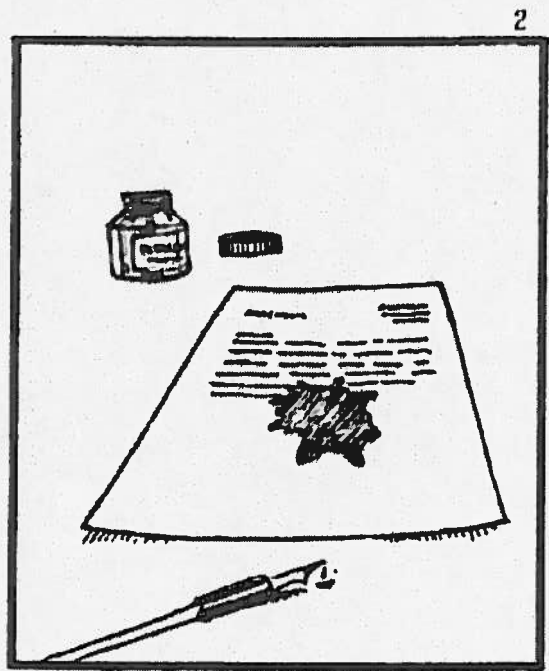
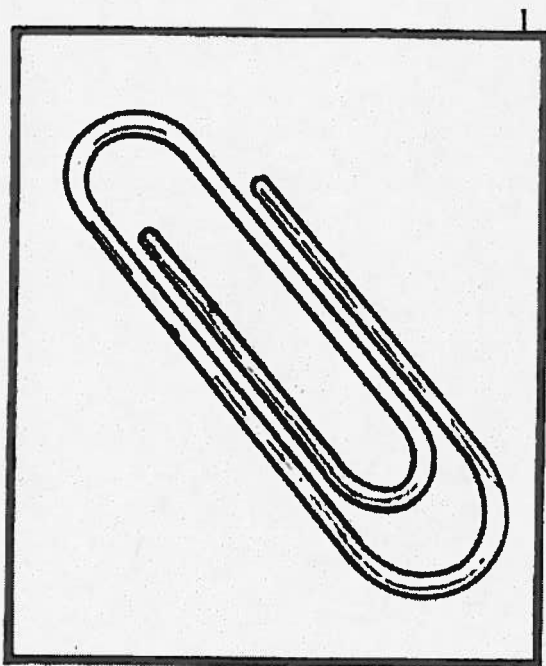


4





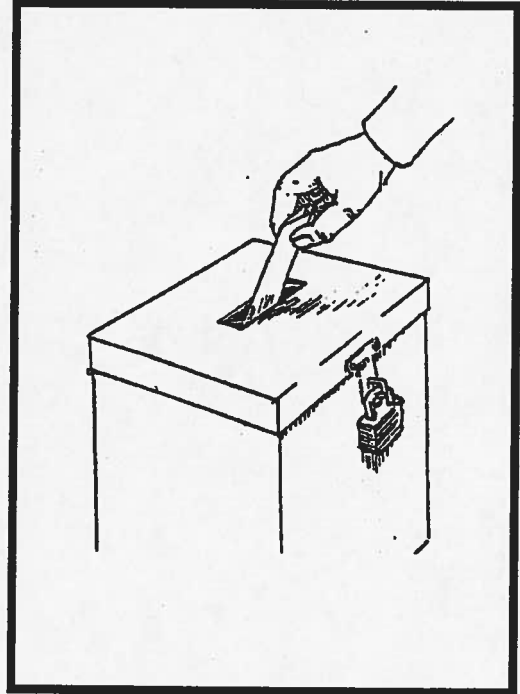




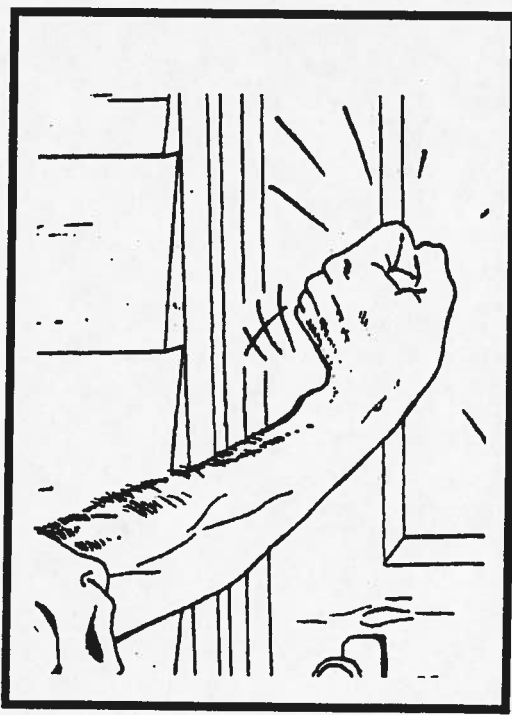
1



2

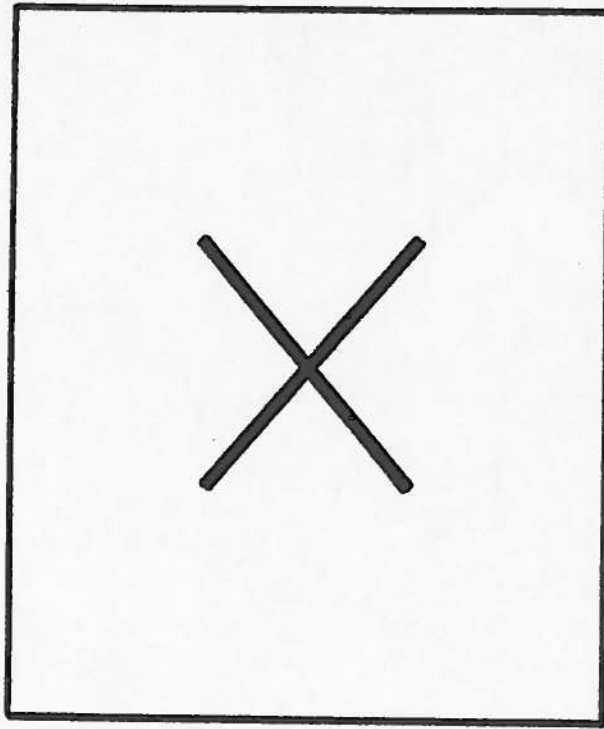


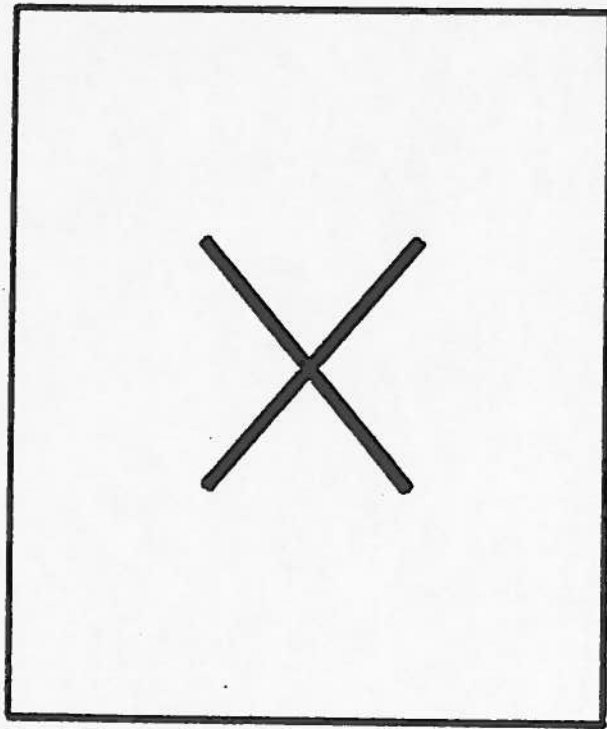
3



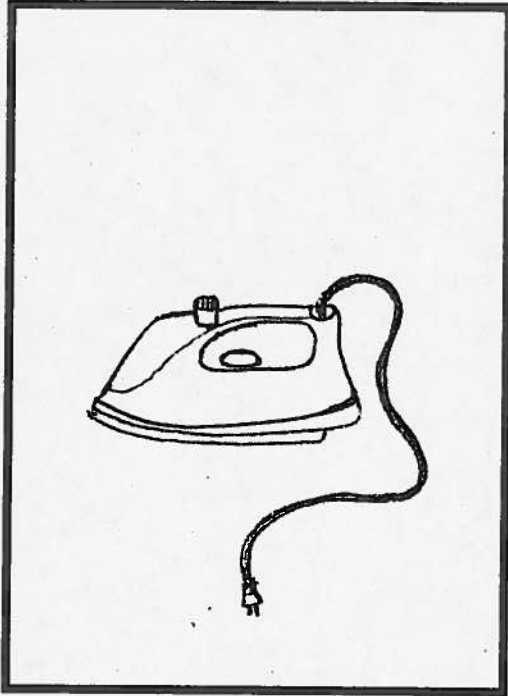
4



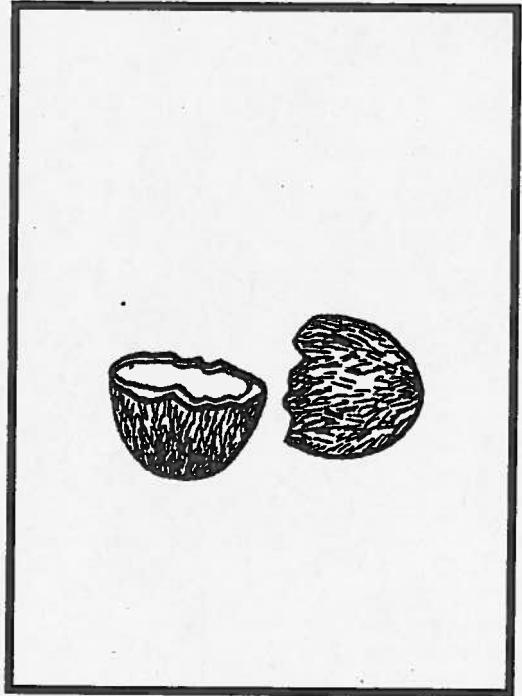




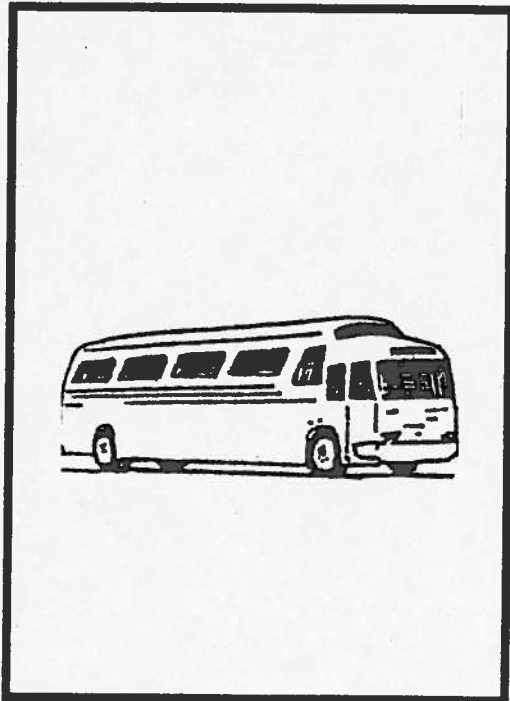
1



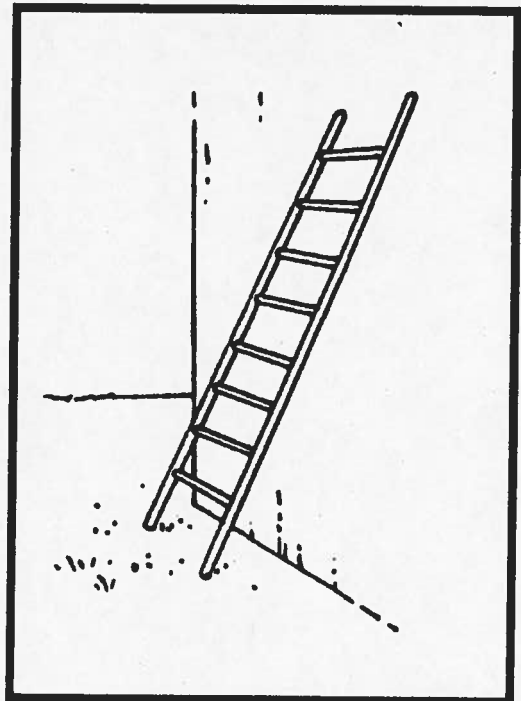
2



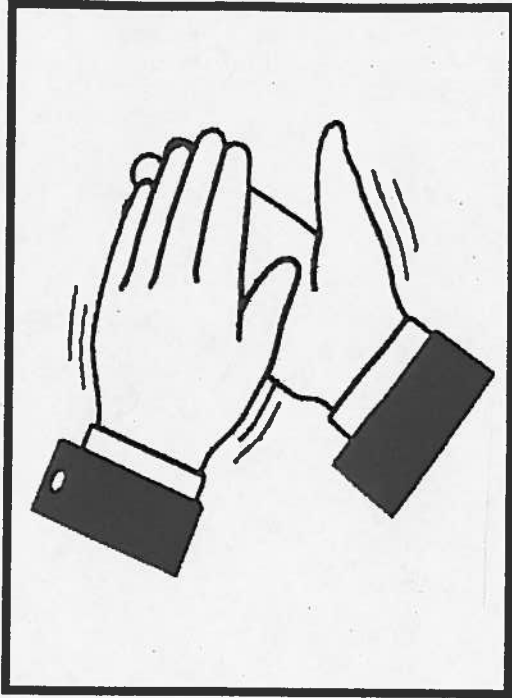
3



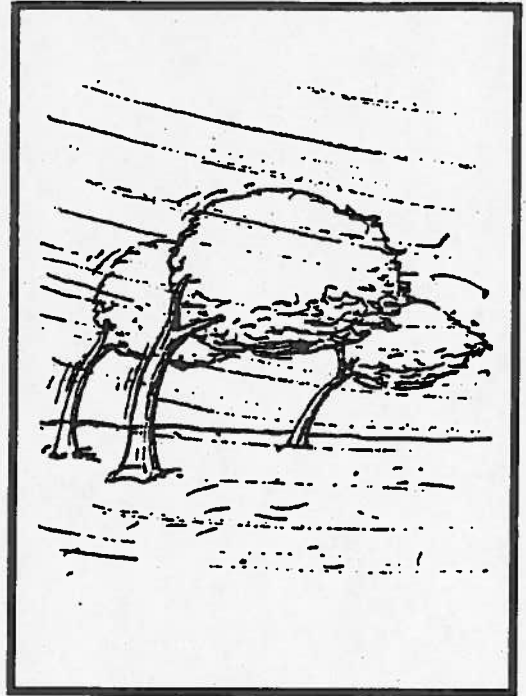
4



1



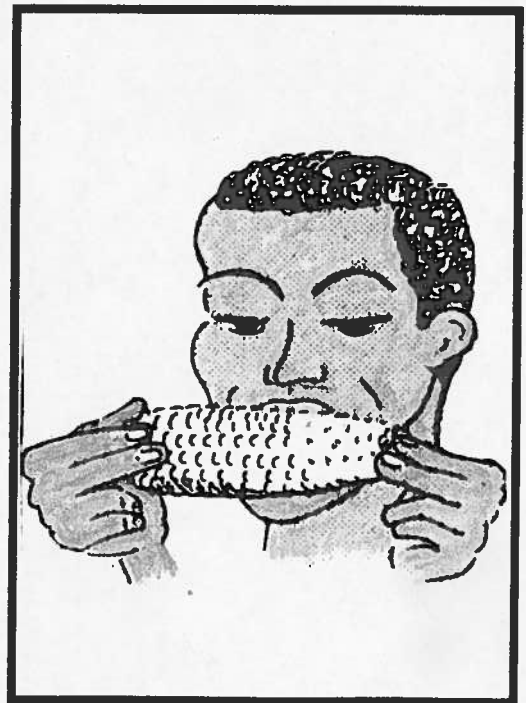
2

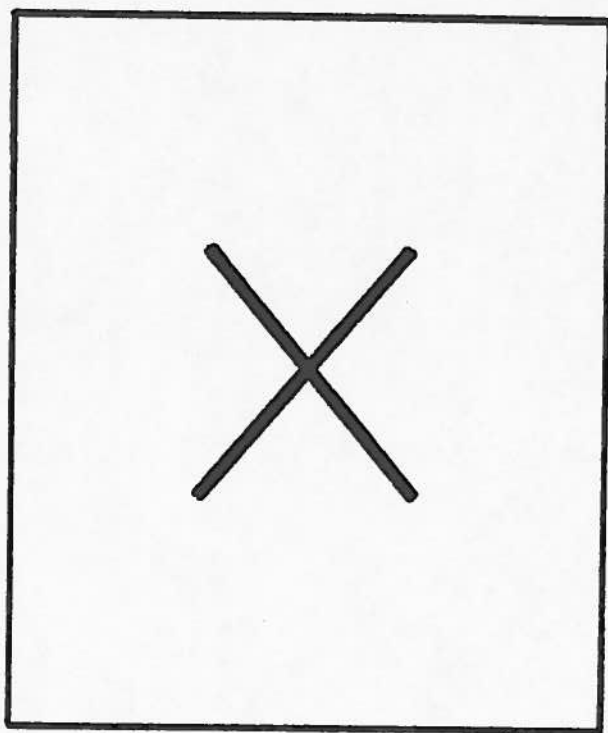


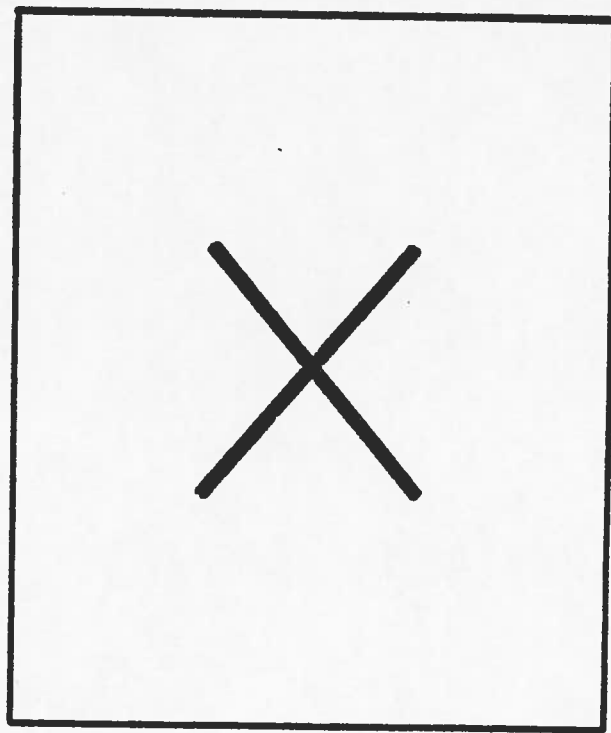
3



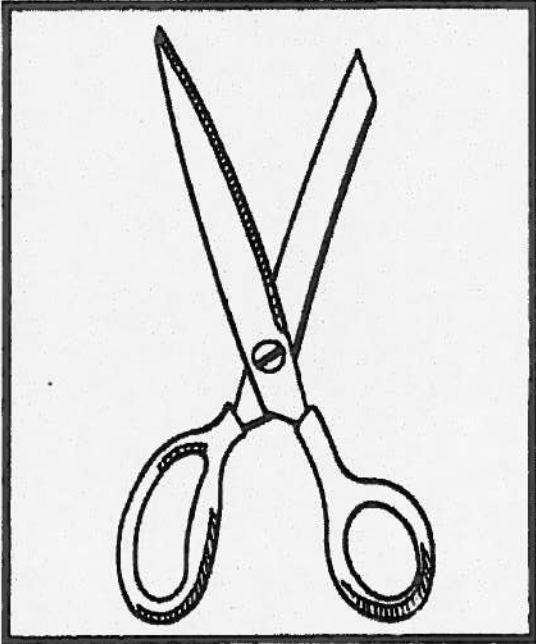
4



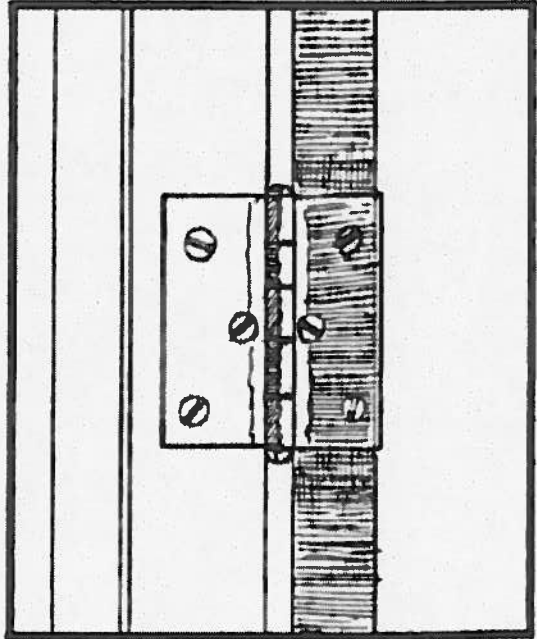




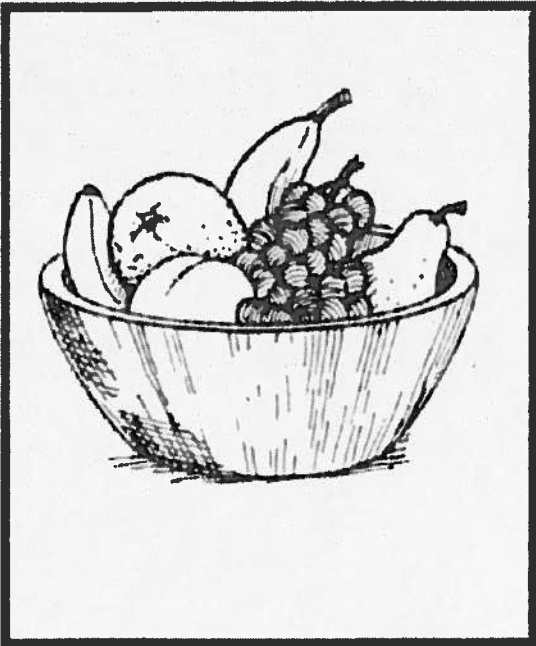
1



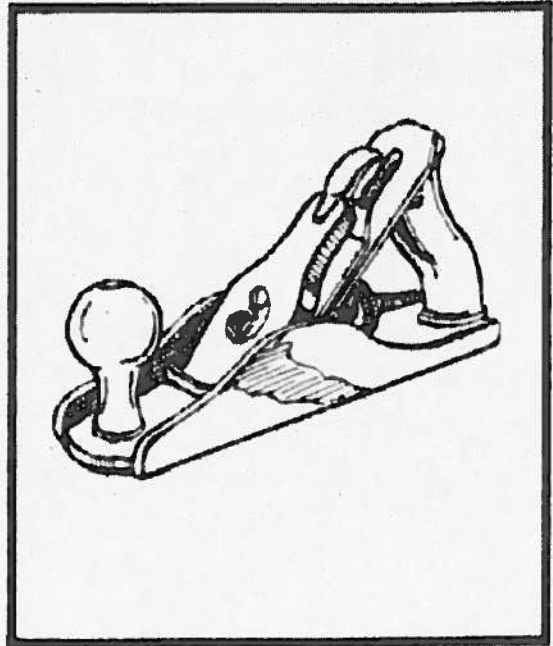
2



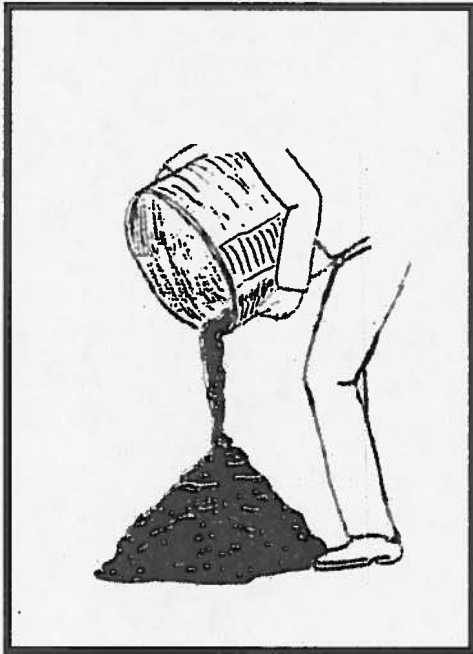
3



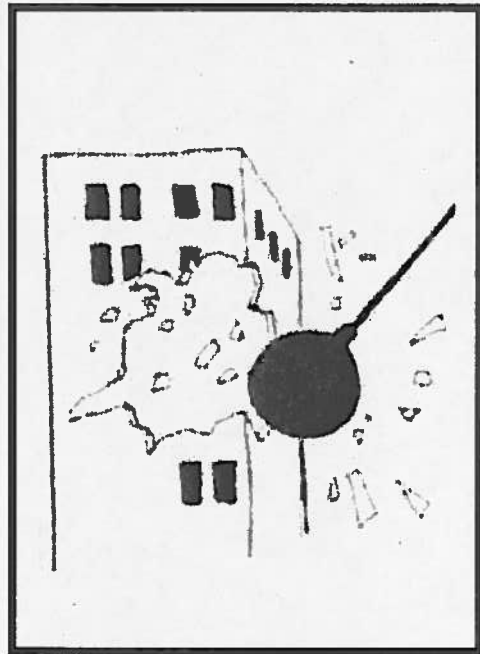
4



1



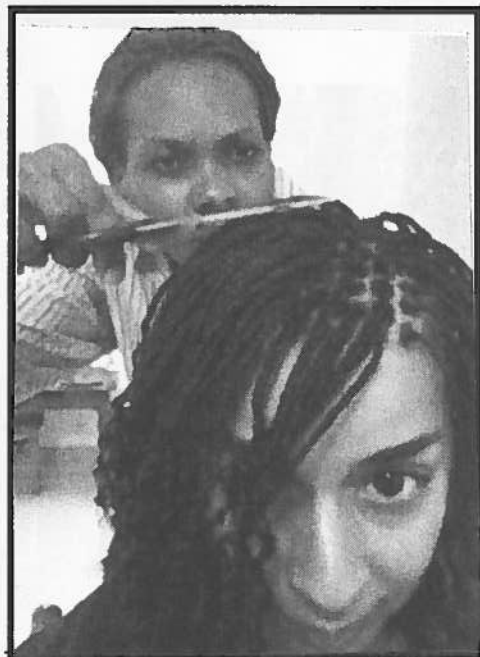
2

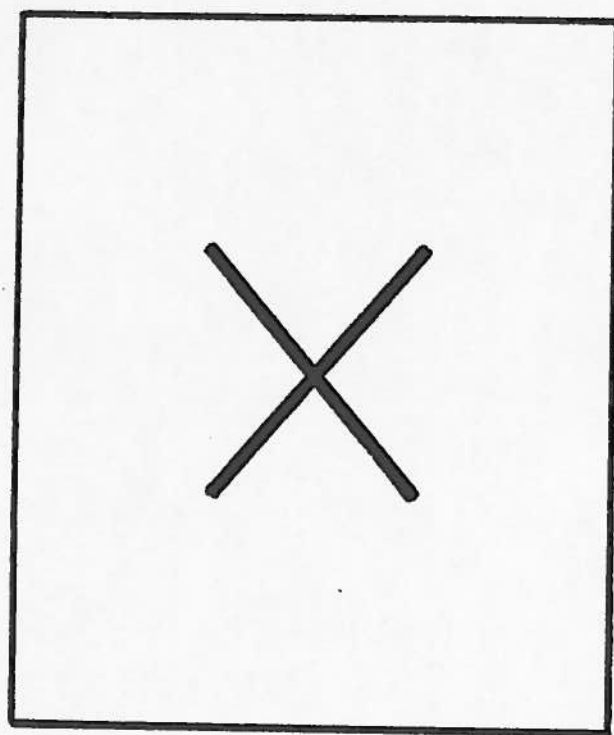


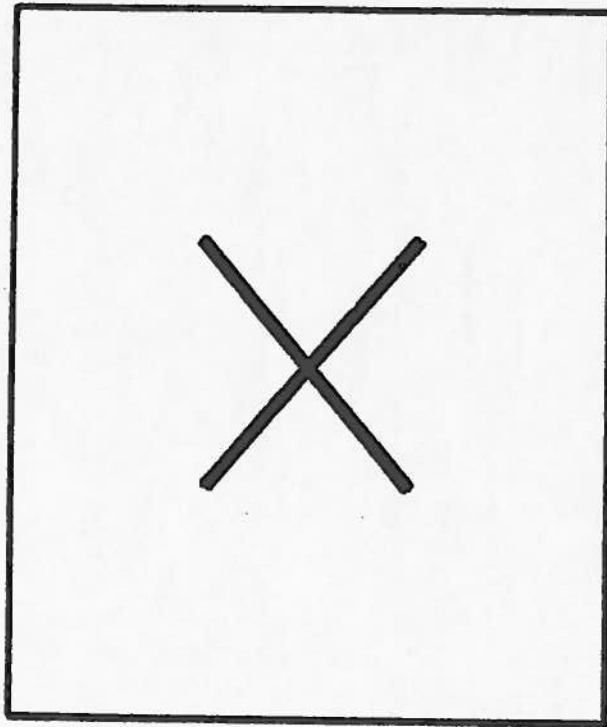
3



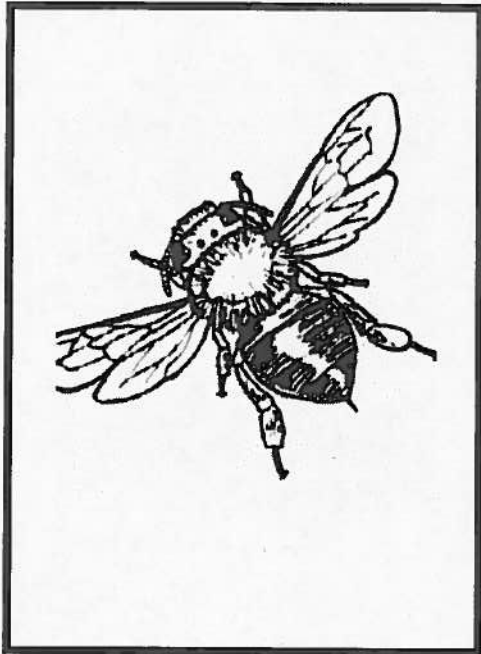
4







1



2



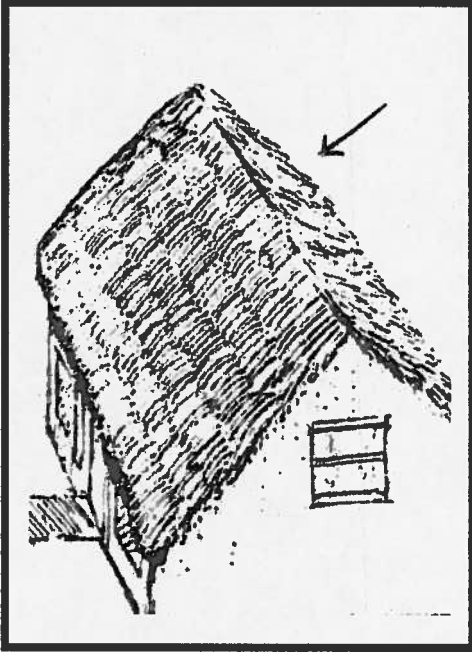
3



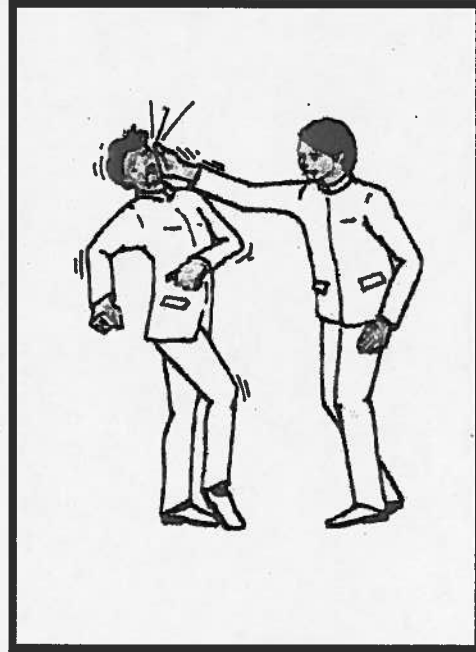
4



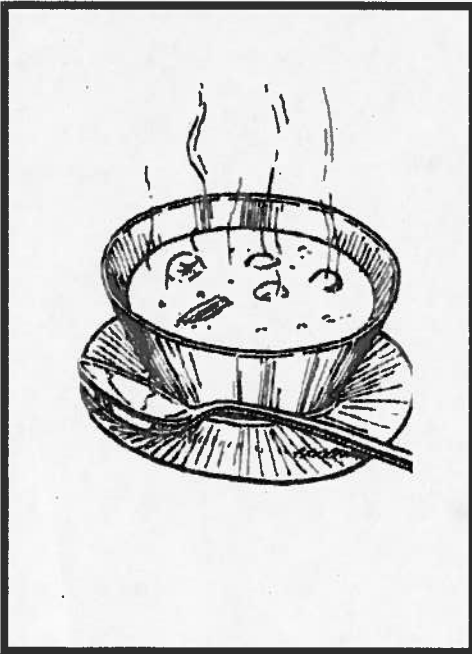
1



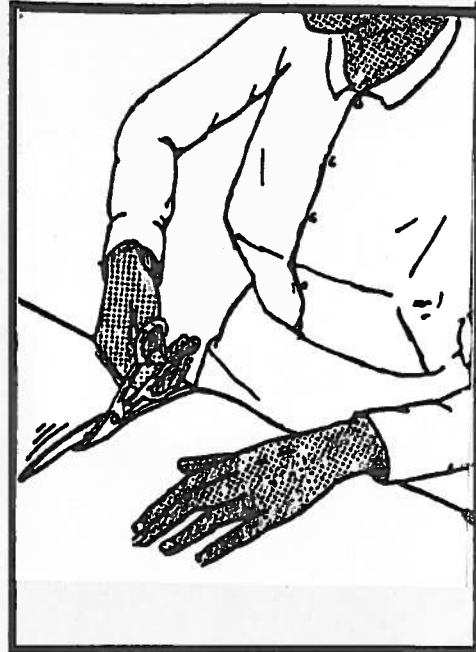
2

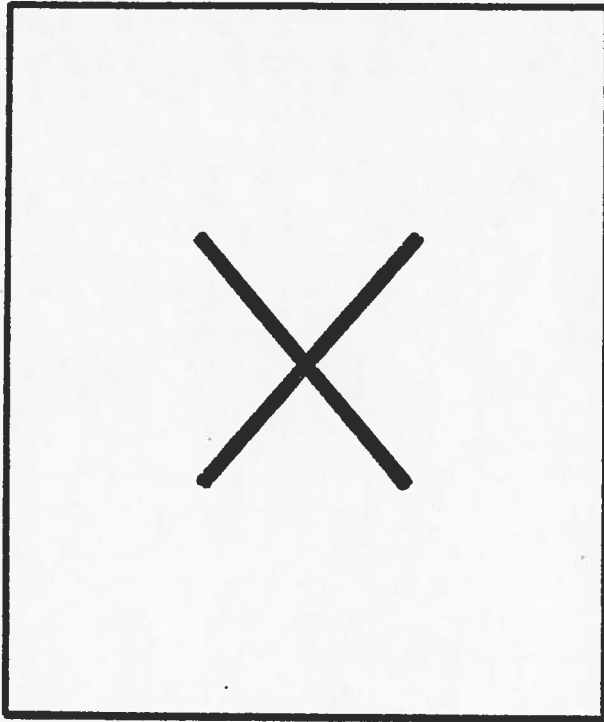


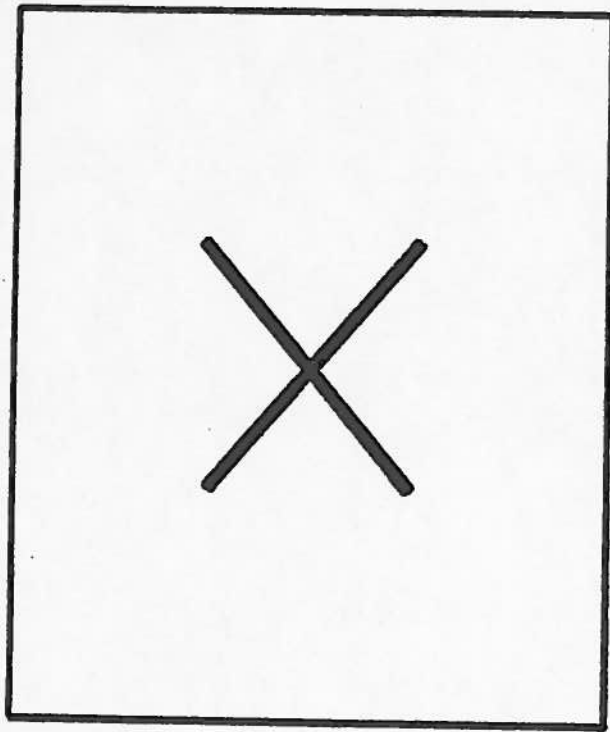
3



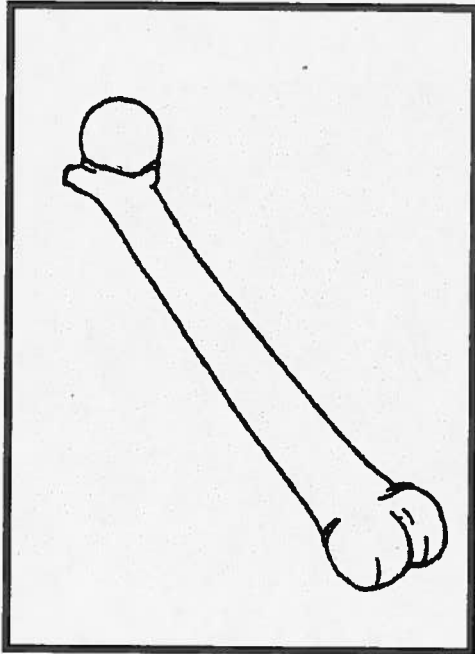
4



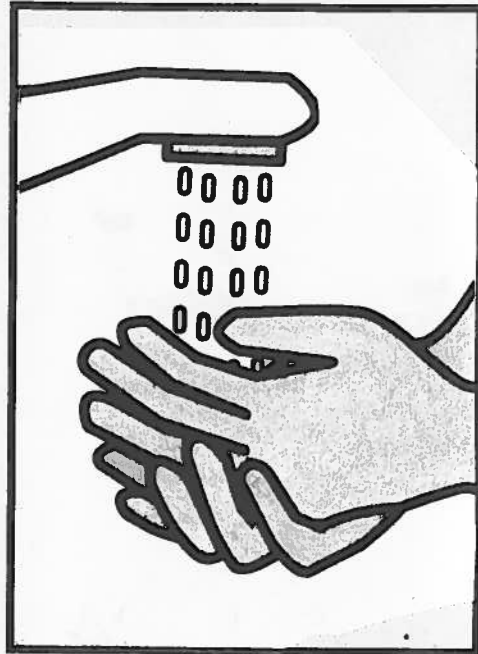




1



2



3

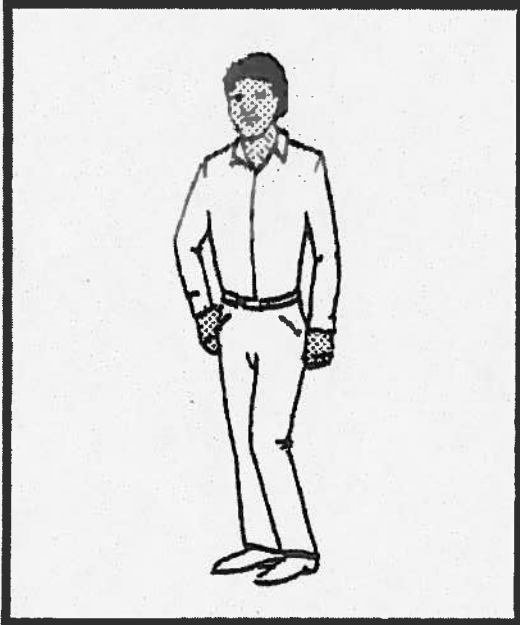


4



NGEYO WECHE

1



2



3



4

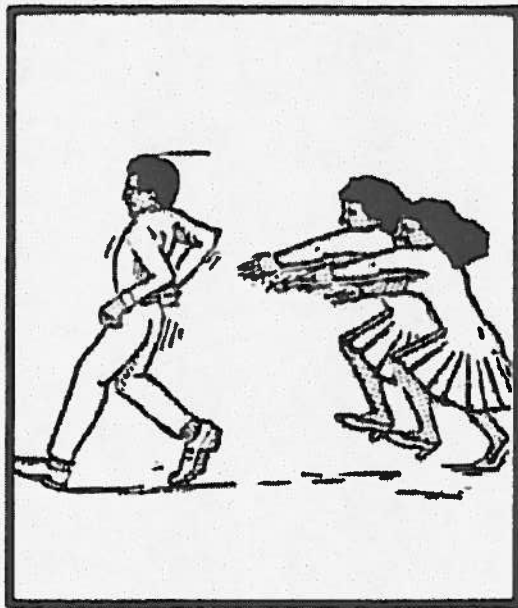


Mfwano

1



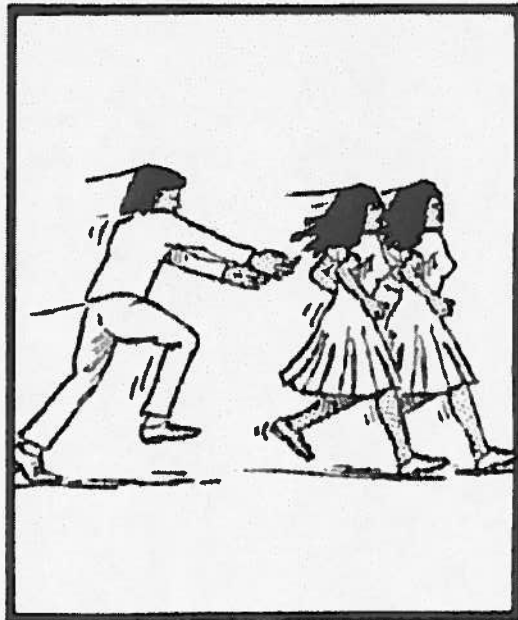
2



3



4

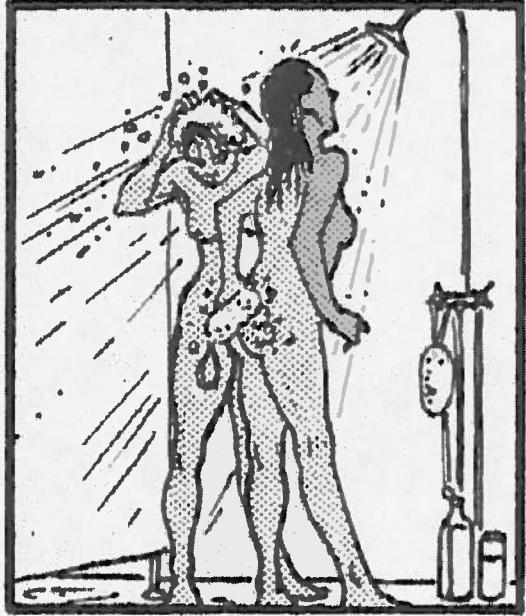


1

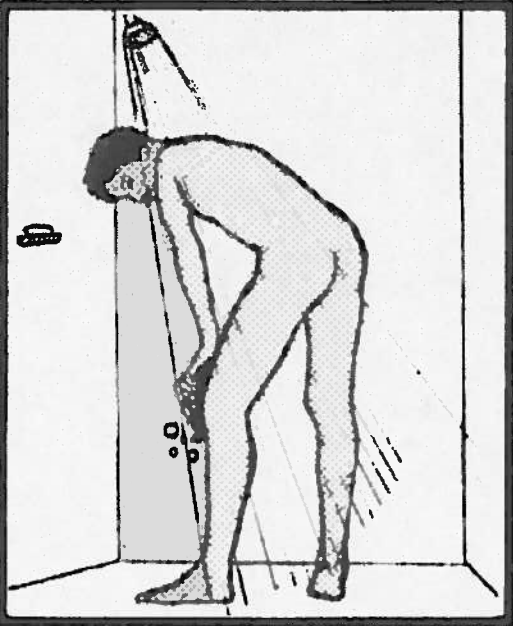
1



2



3



4



2

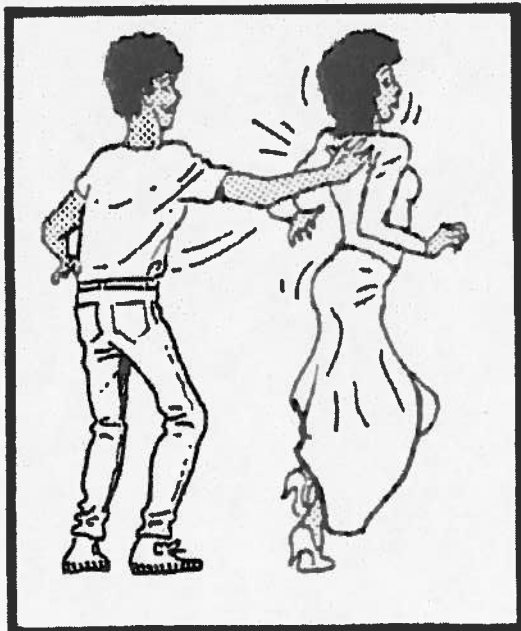
1



2



3



4

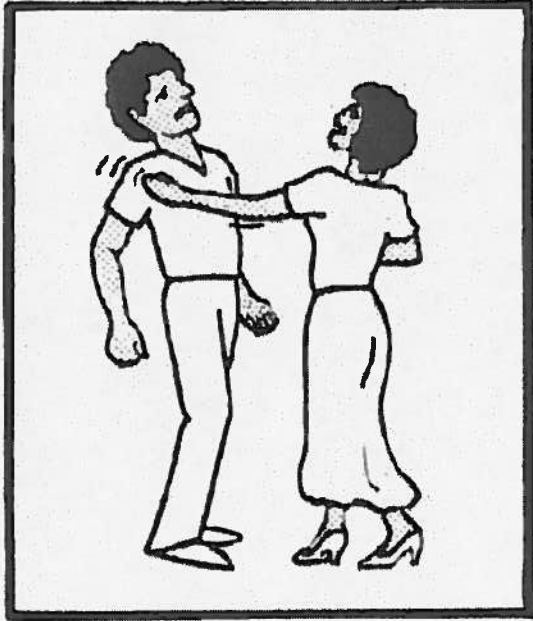


3

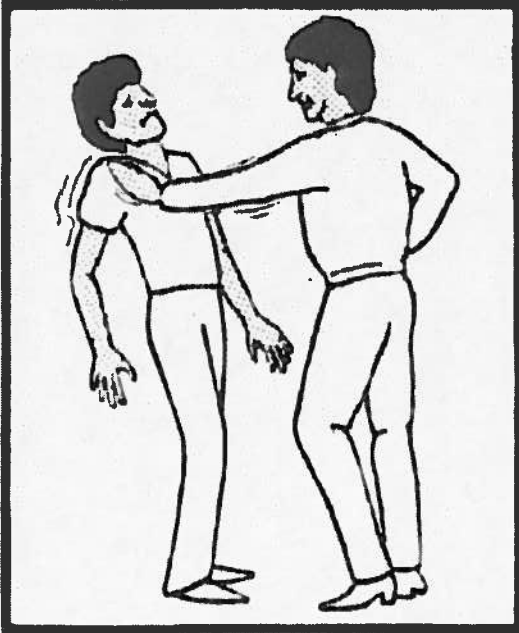
1



2



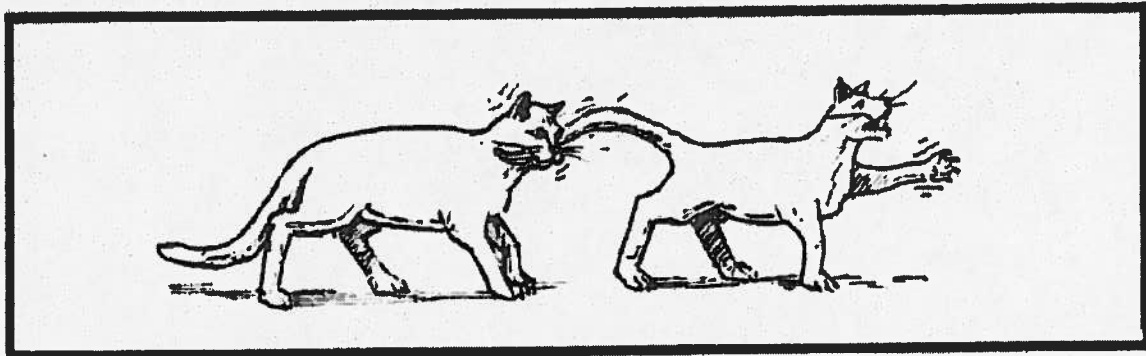
3



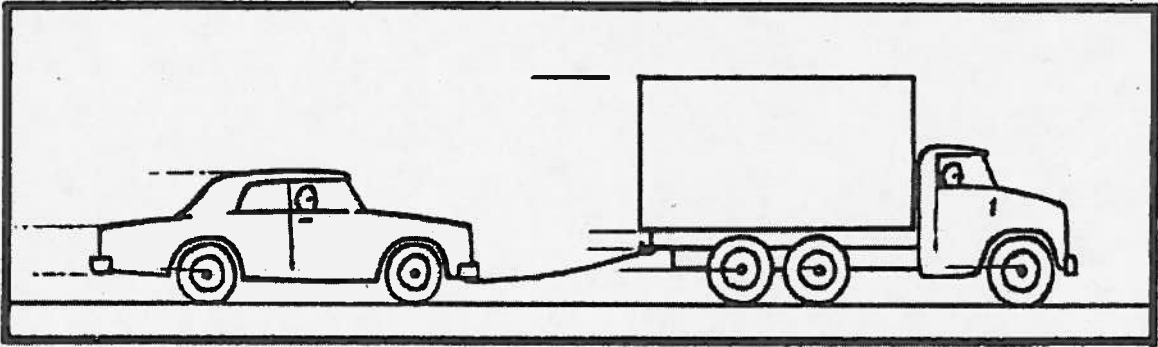
4



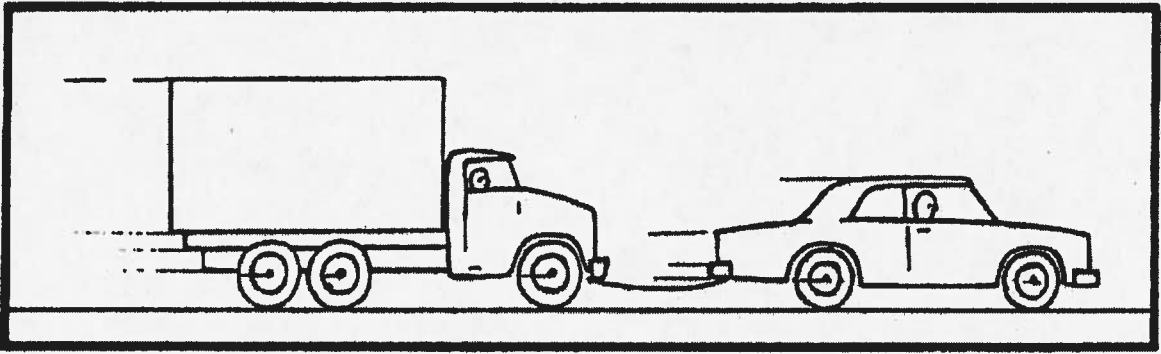
4



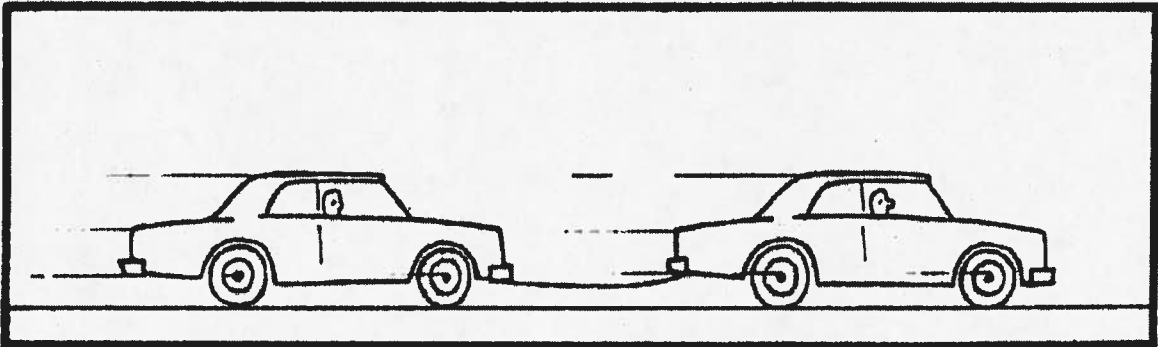
1



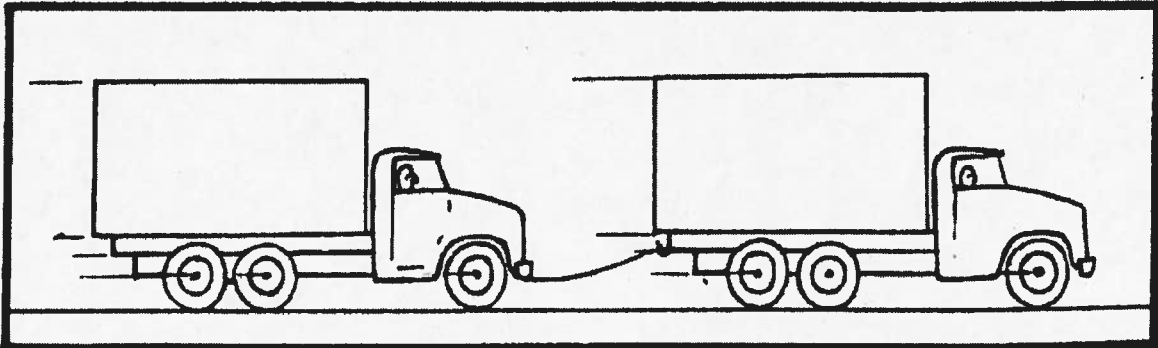
2



3



4



1



2



3



4



7

1

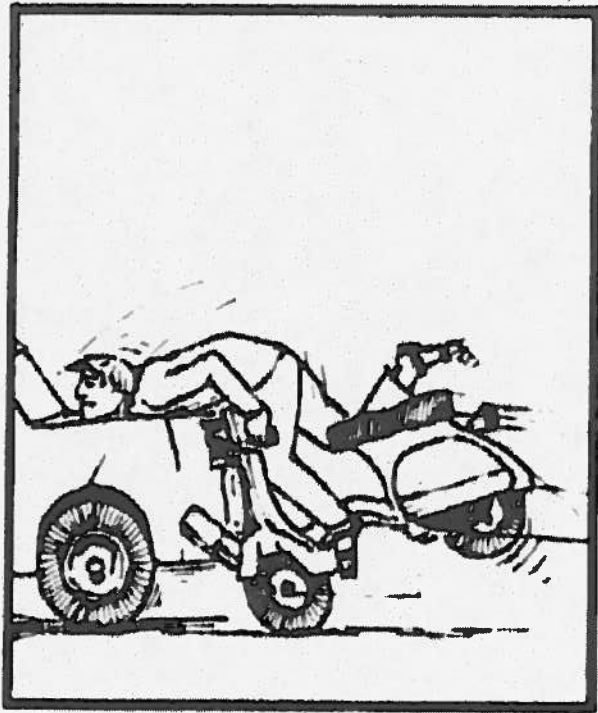


2

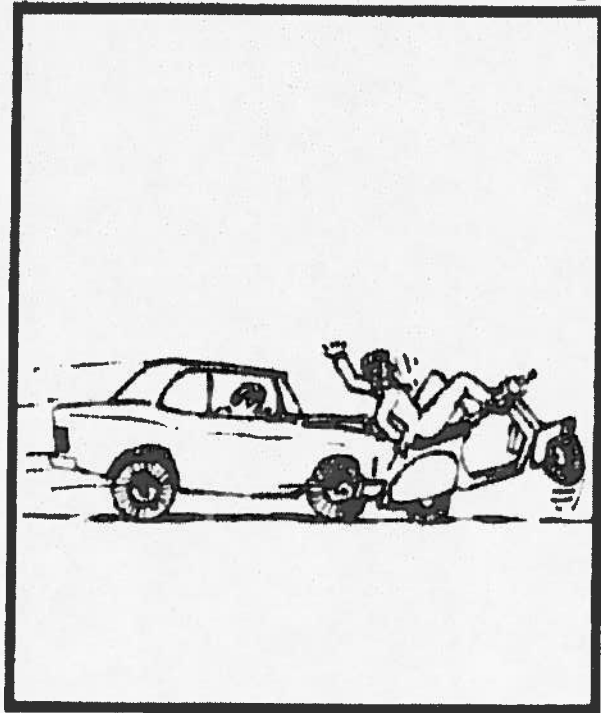


8

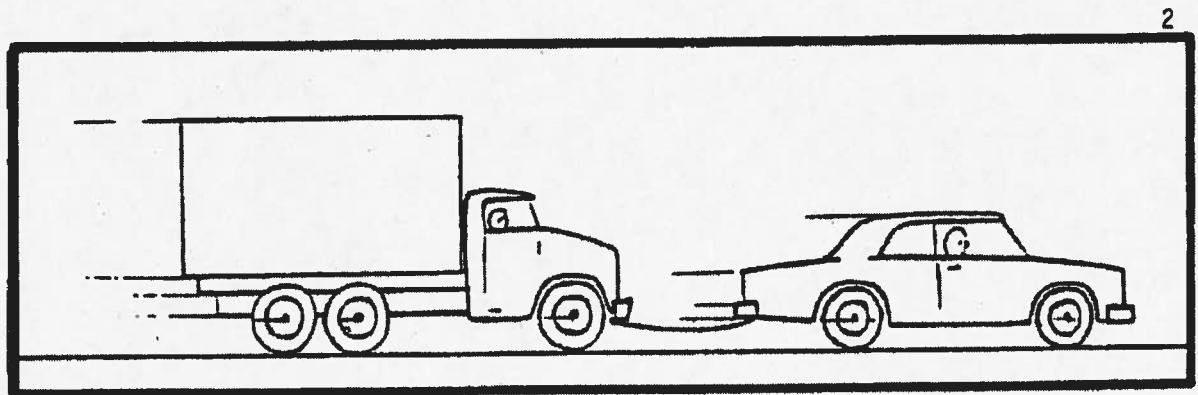
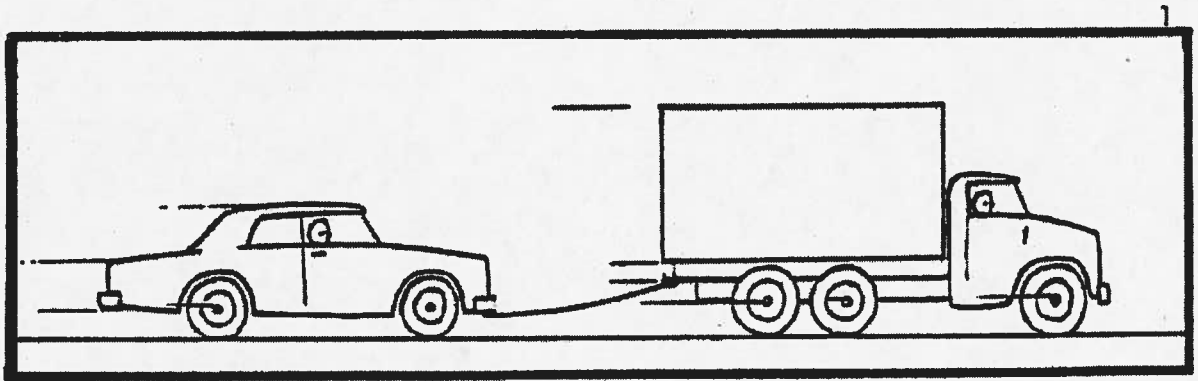
1



2



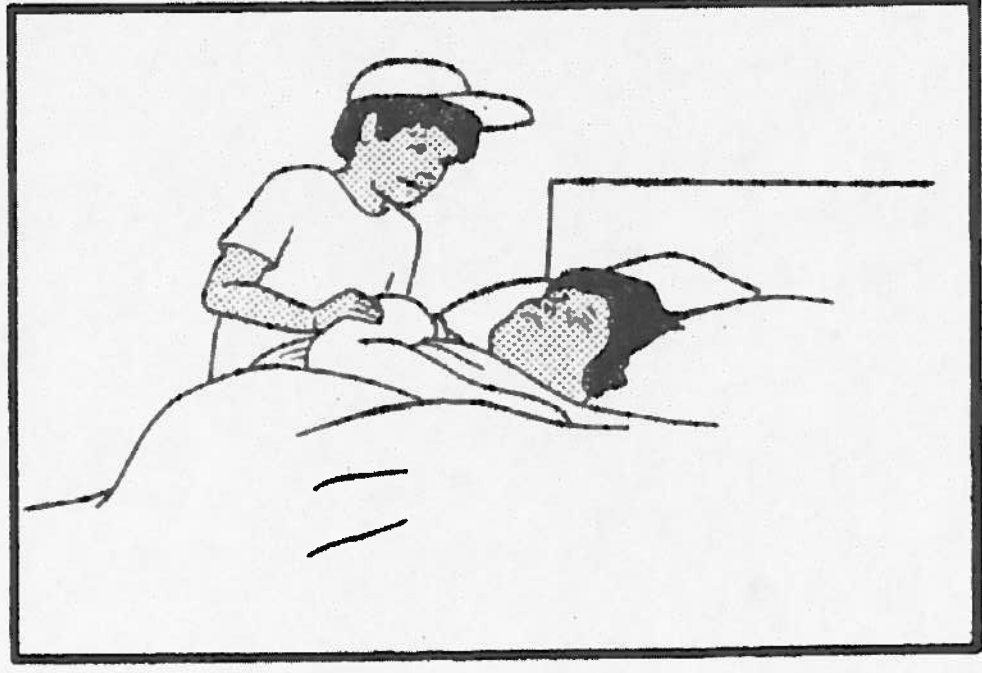
9



1



2



1



2



12

1



2

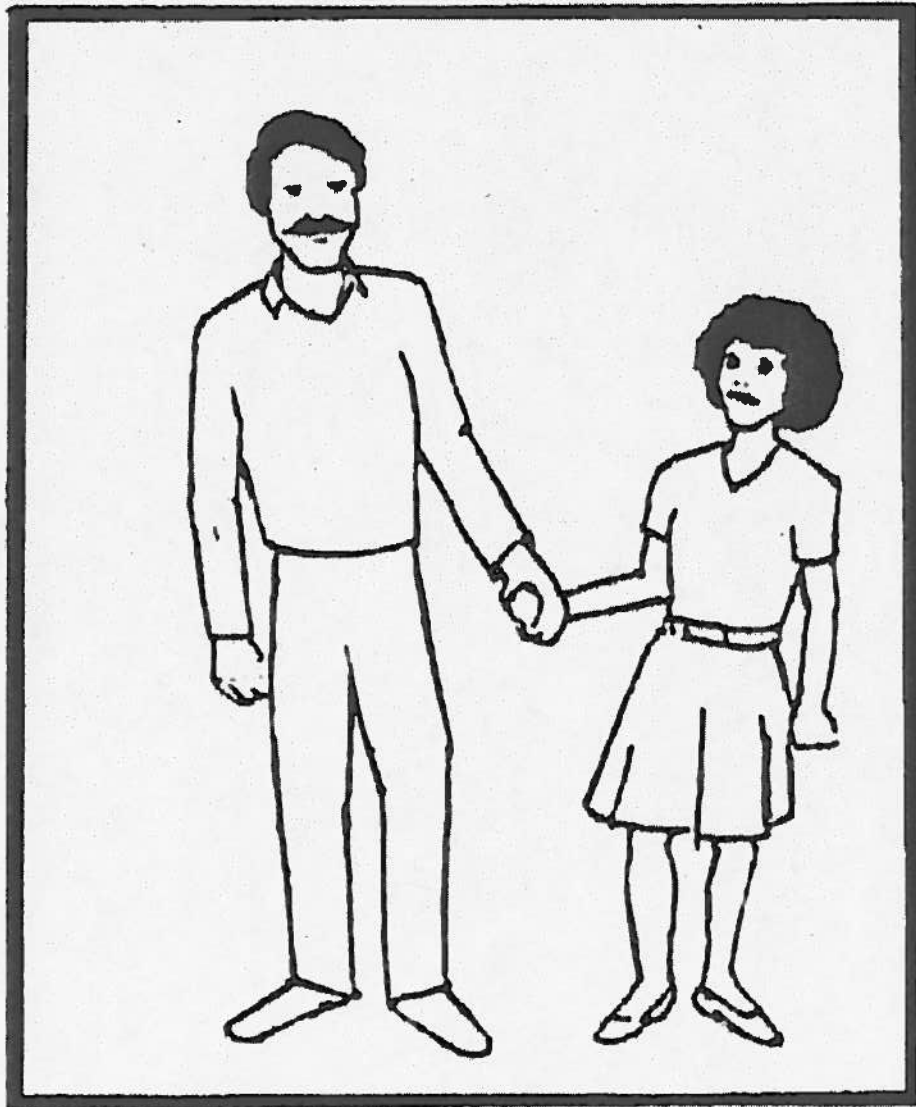




1

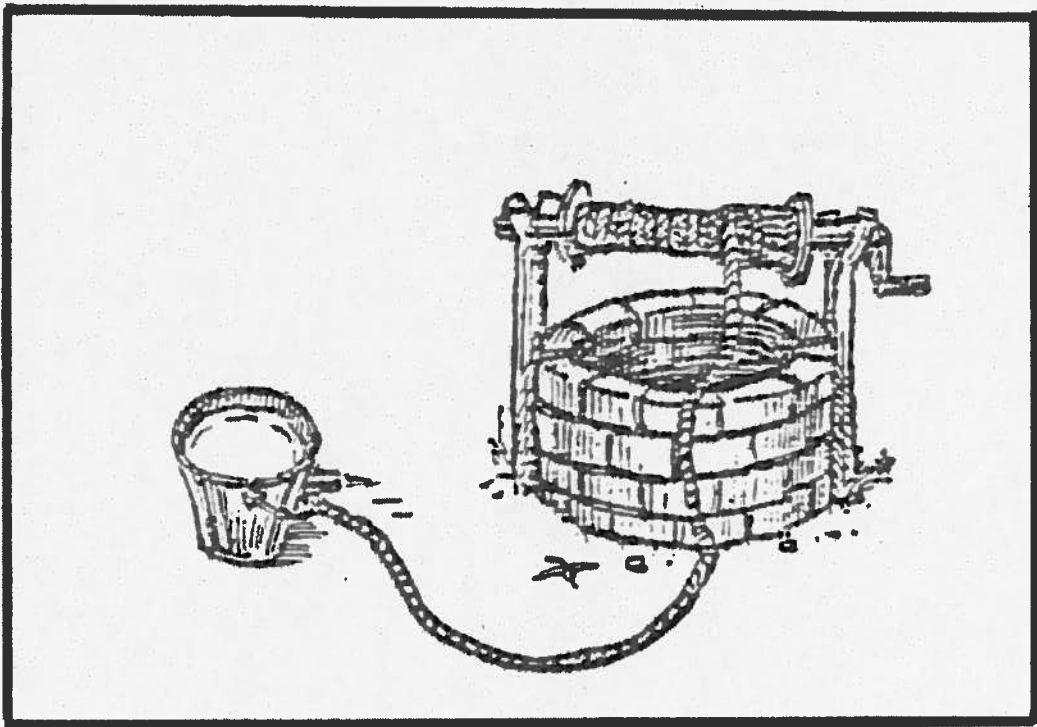
2

1

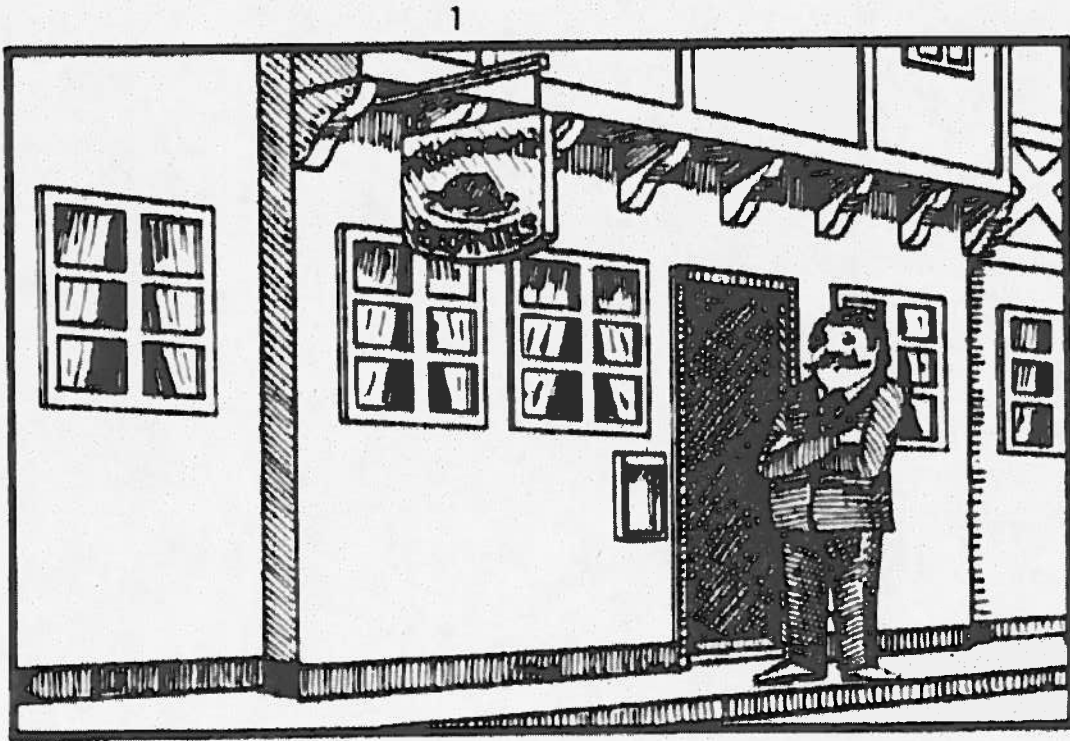


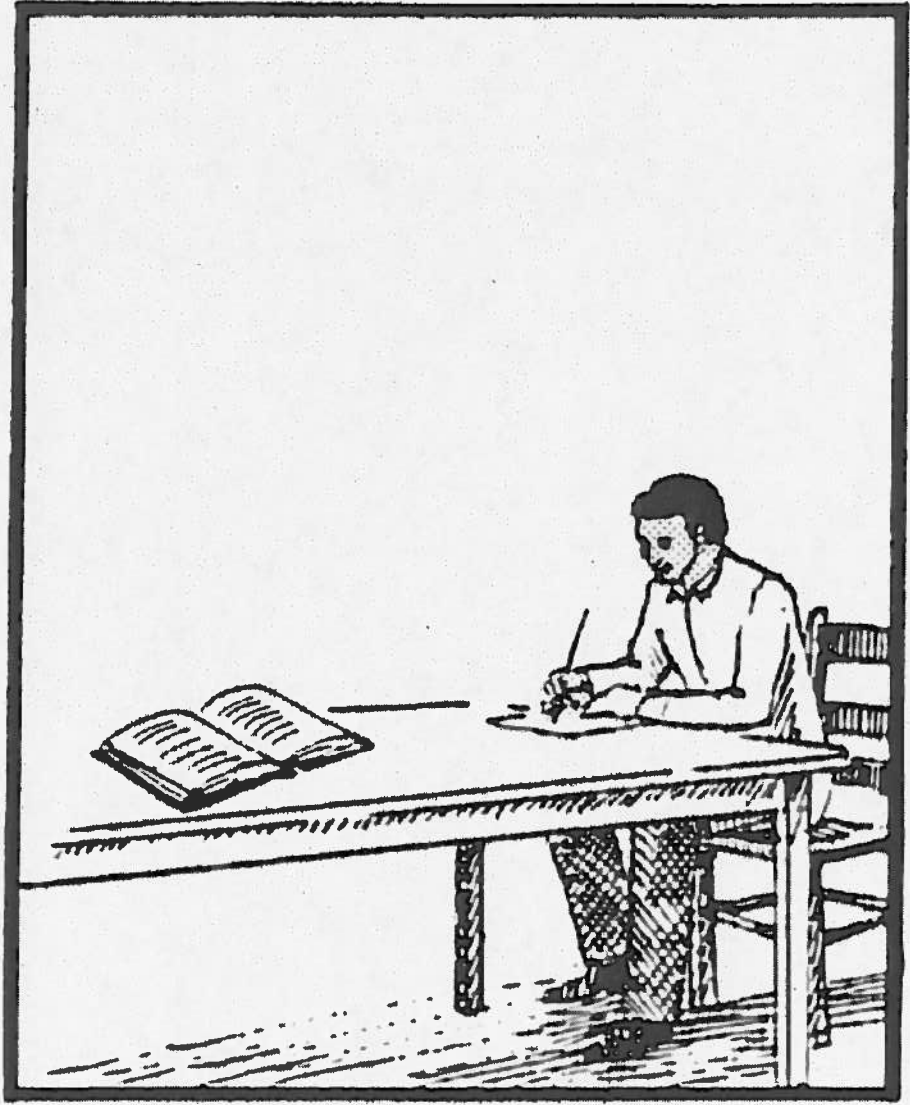
2

1



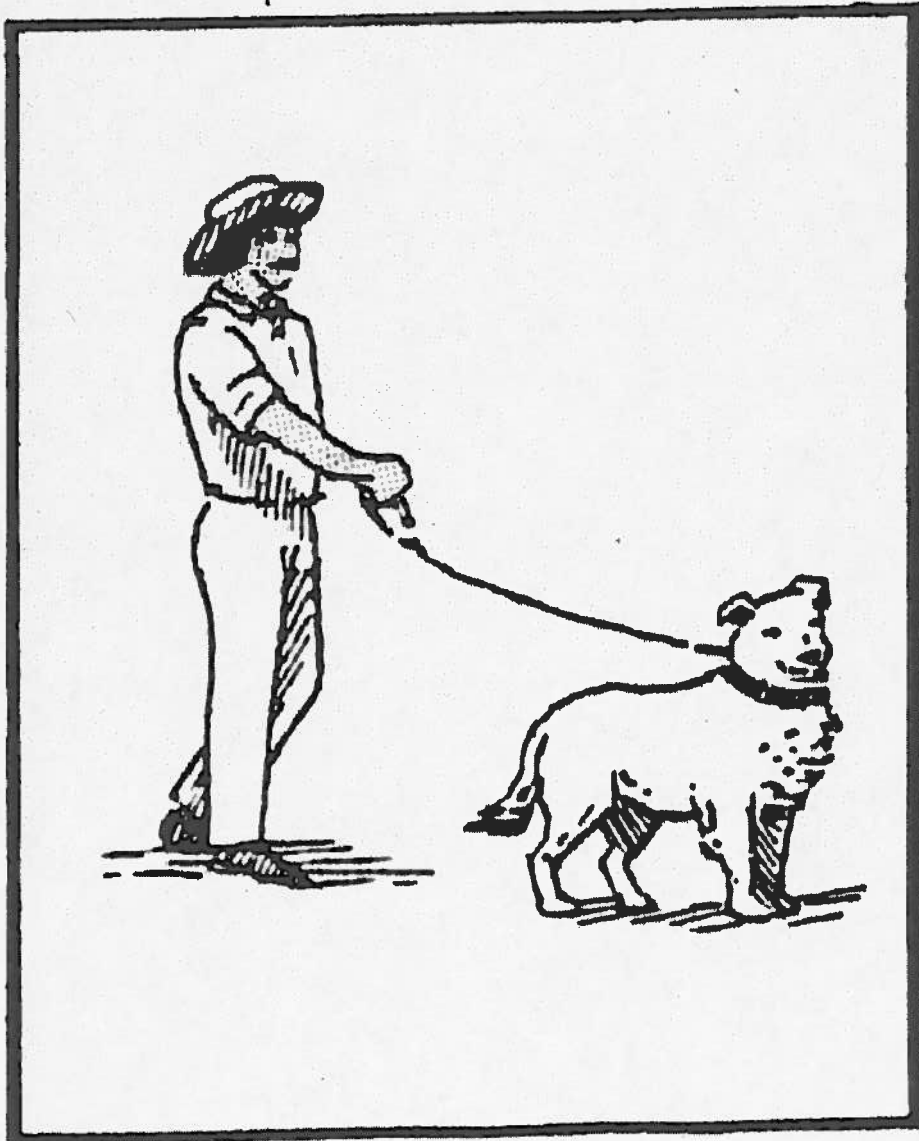
2



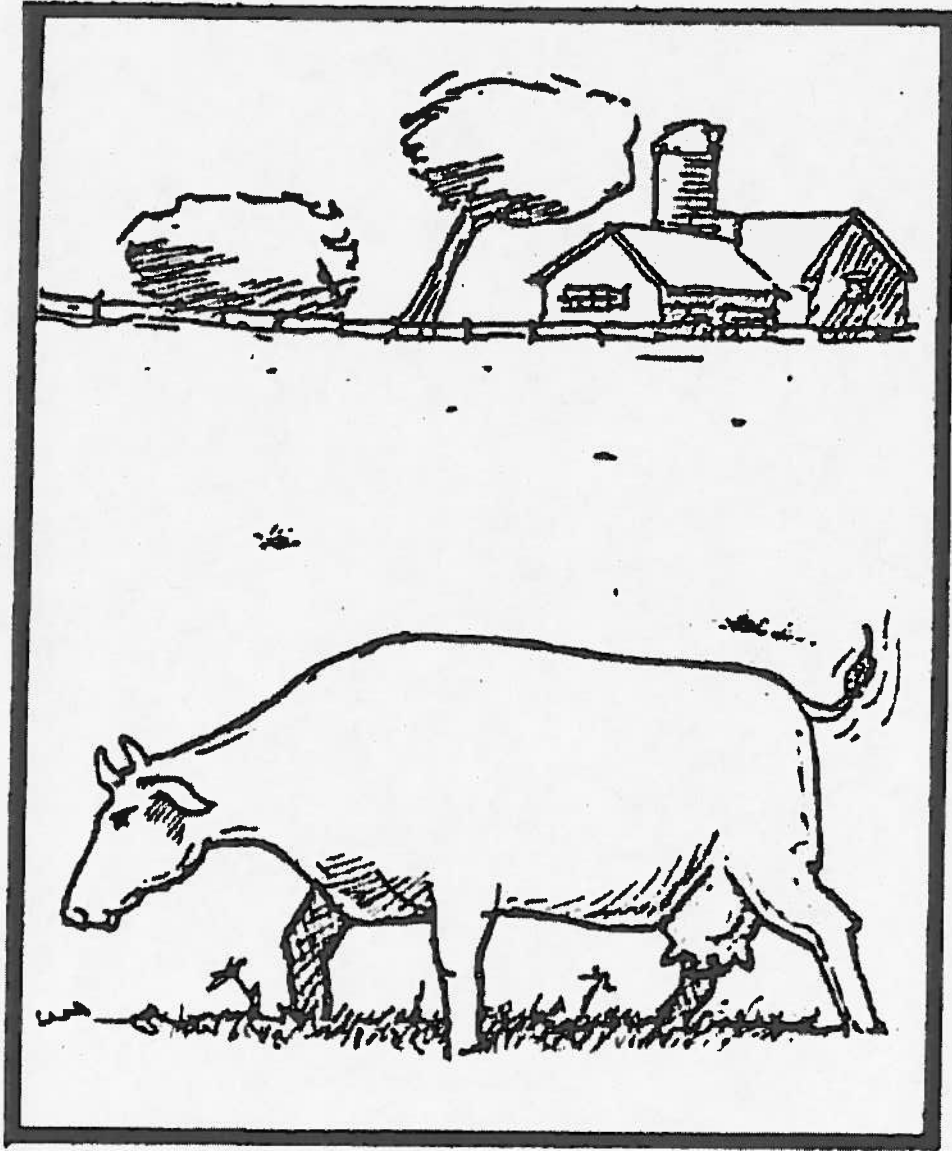


2

1



2

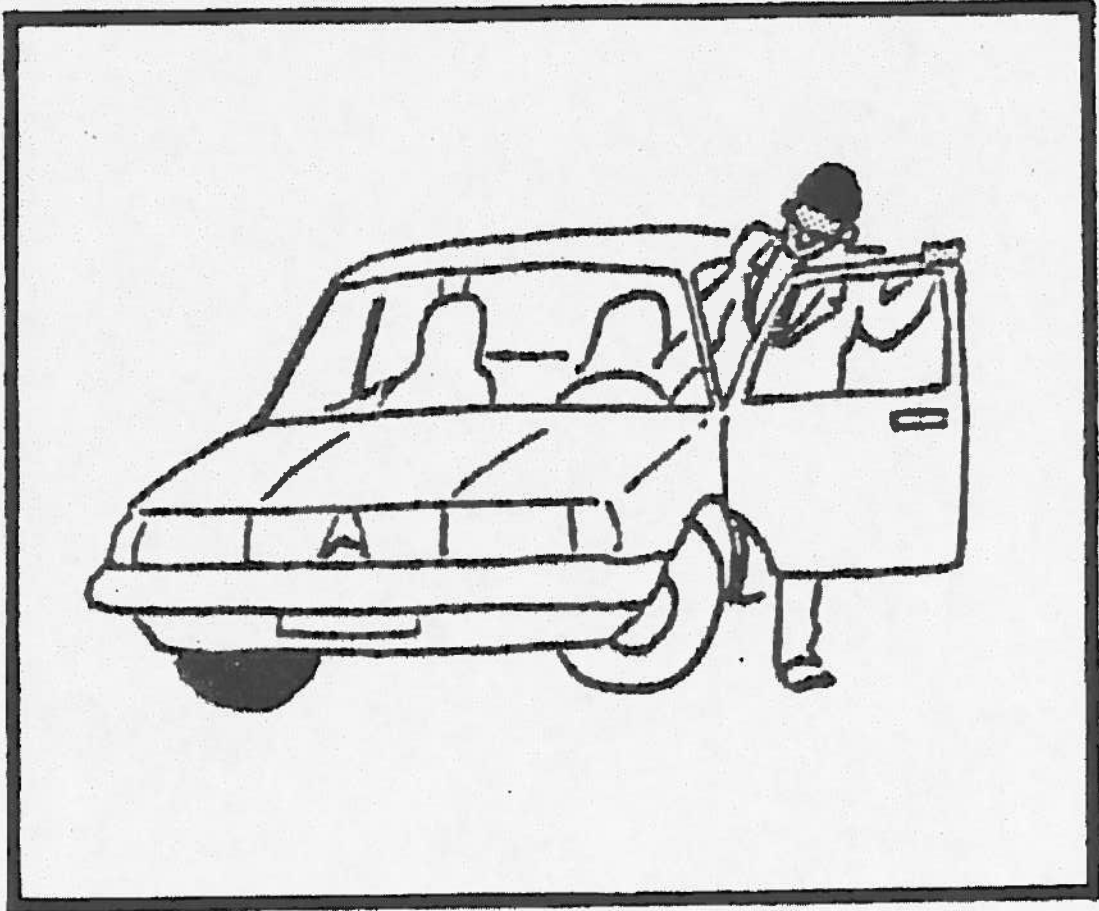


1

2

1

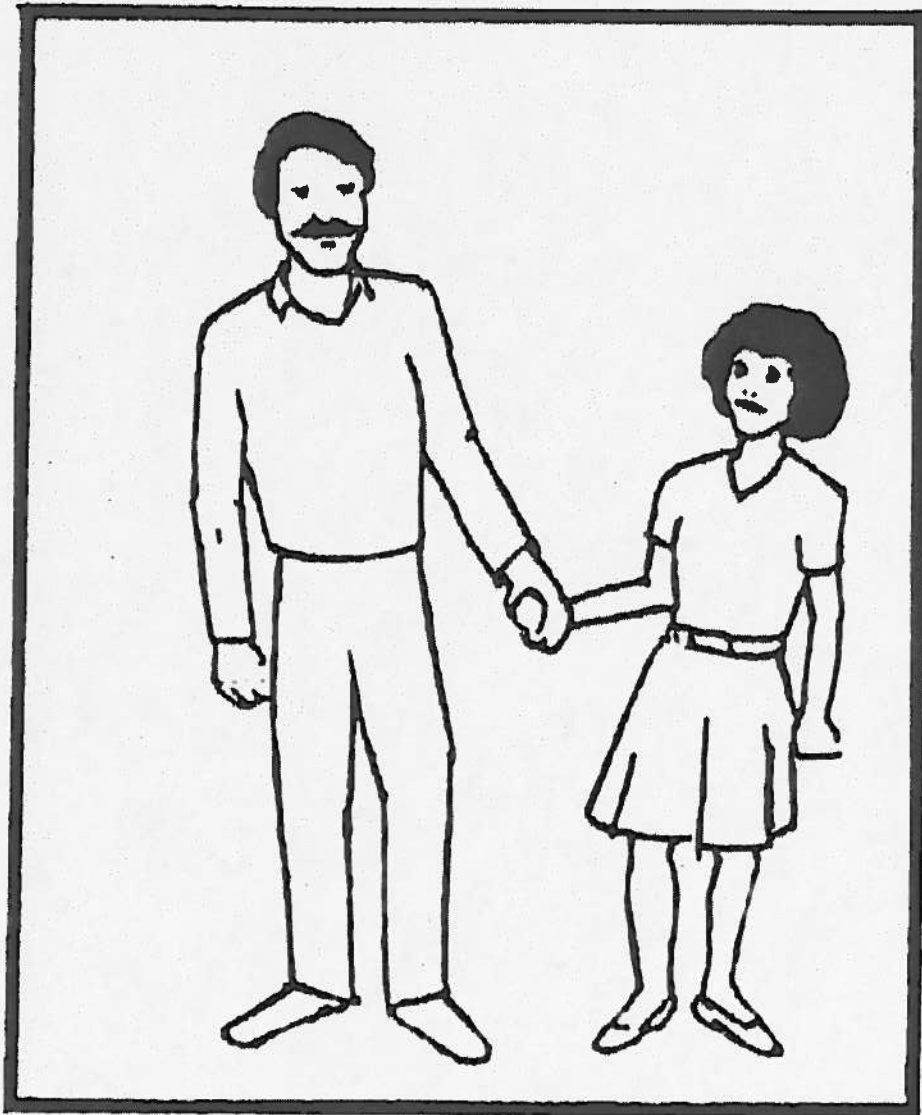
2



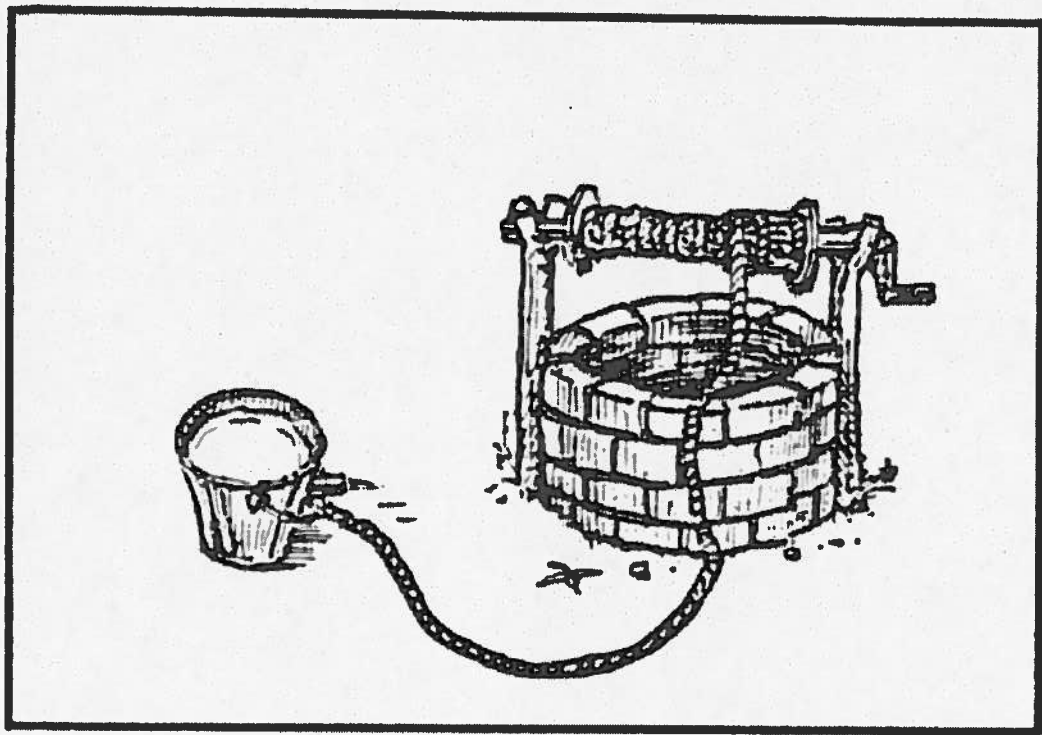


1

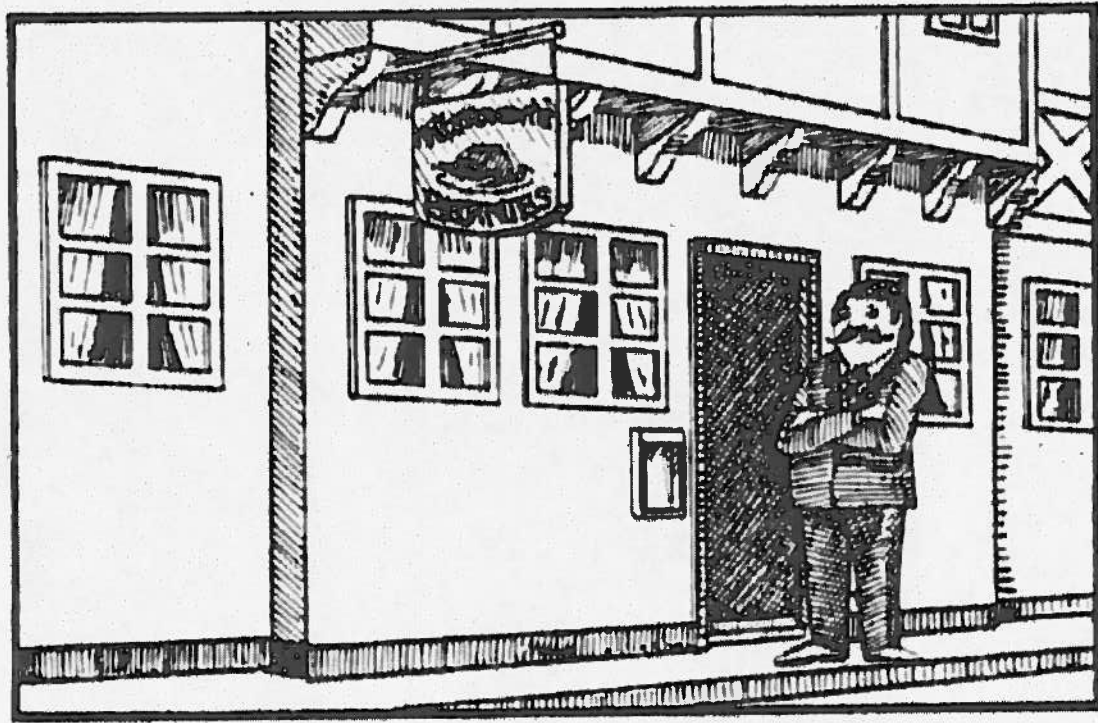
2



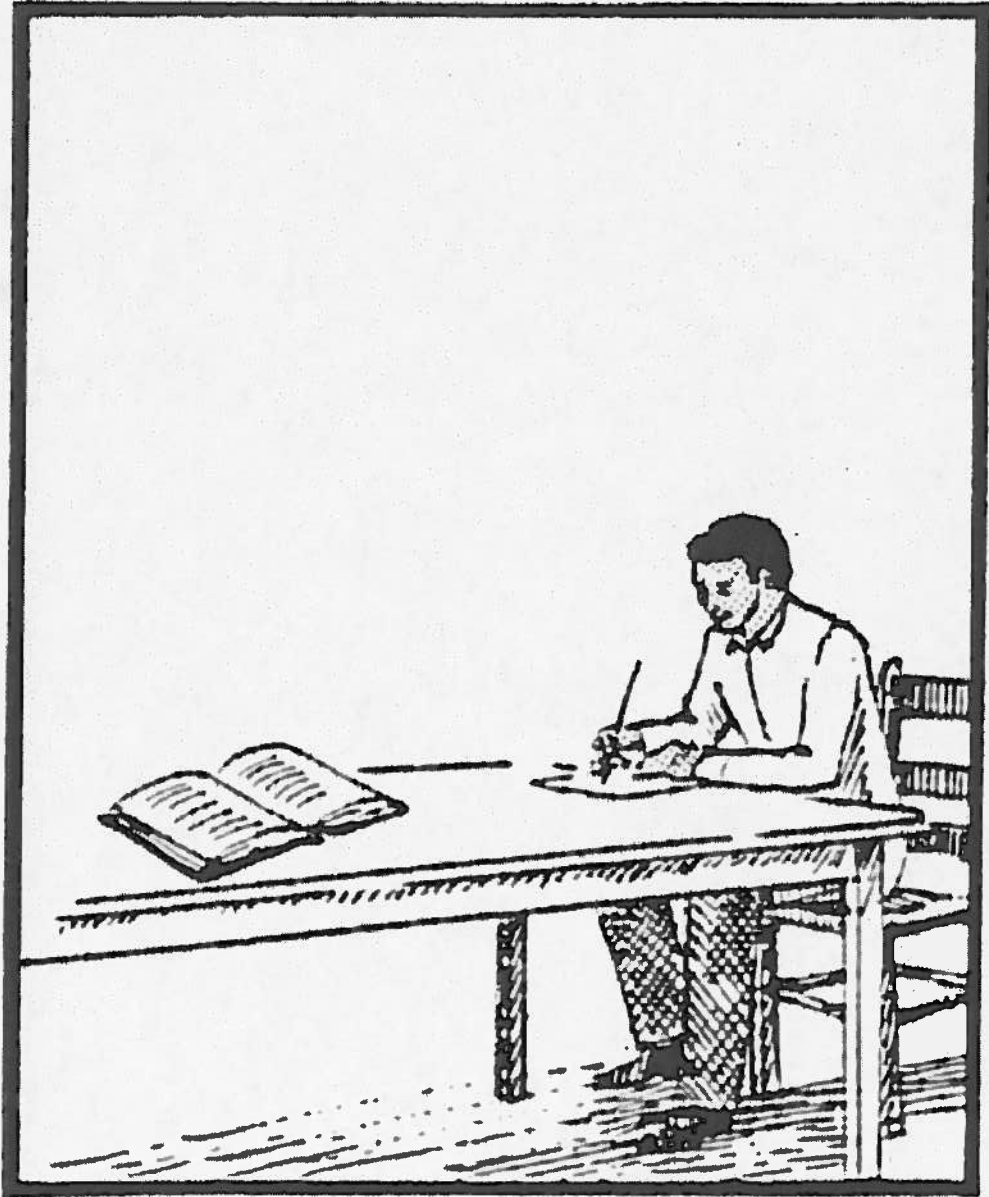
2



2

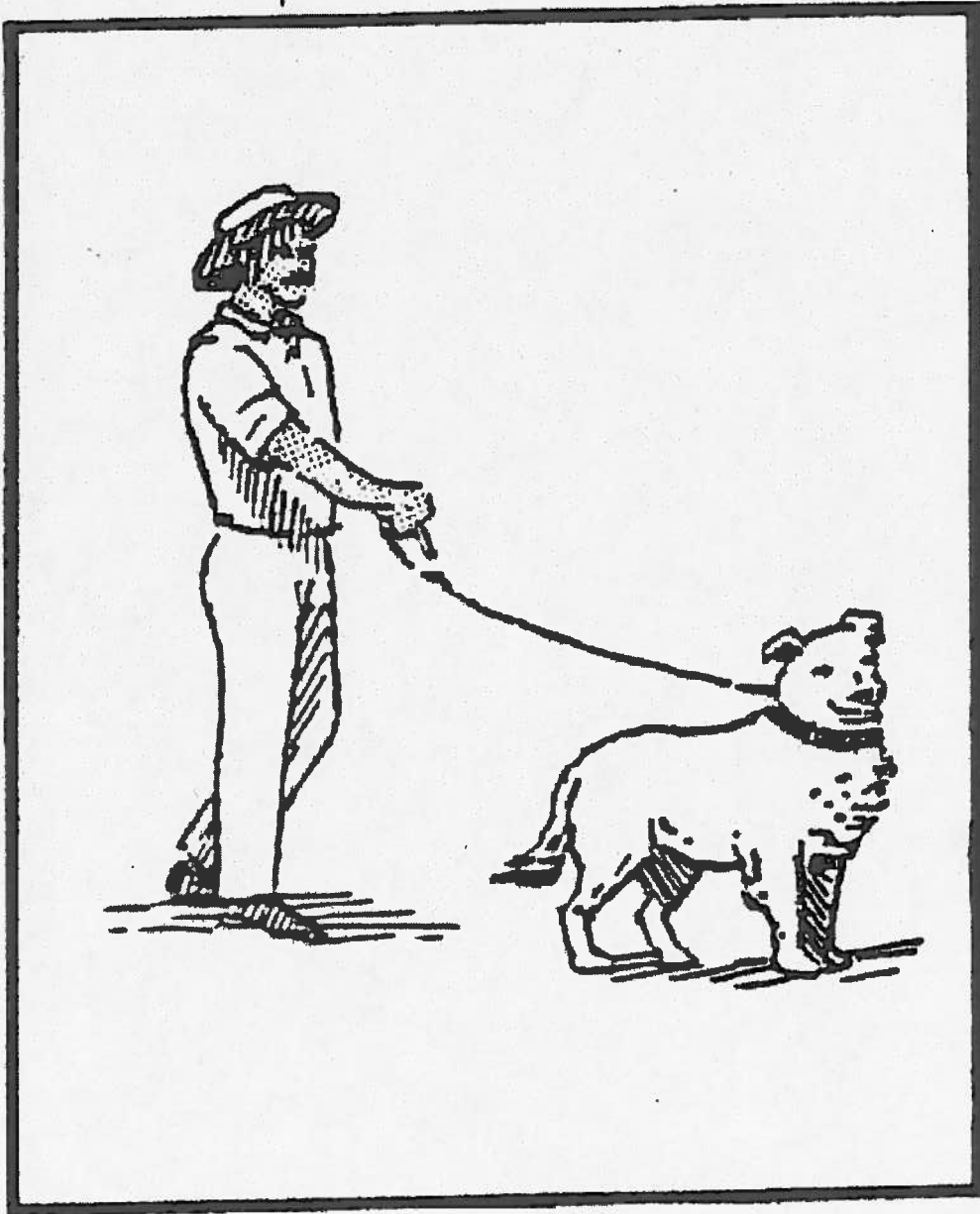


2

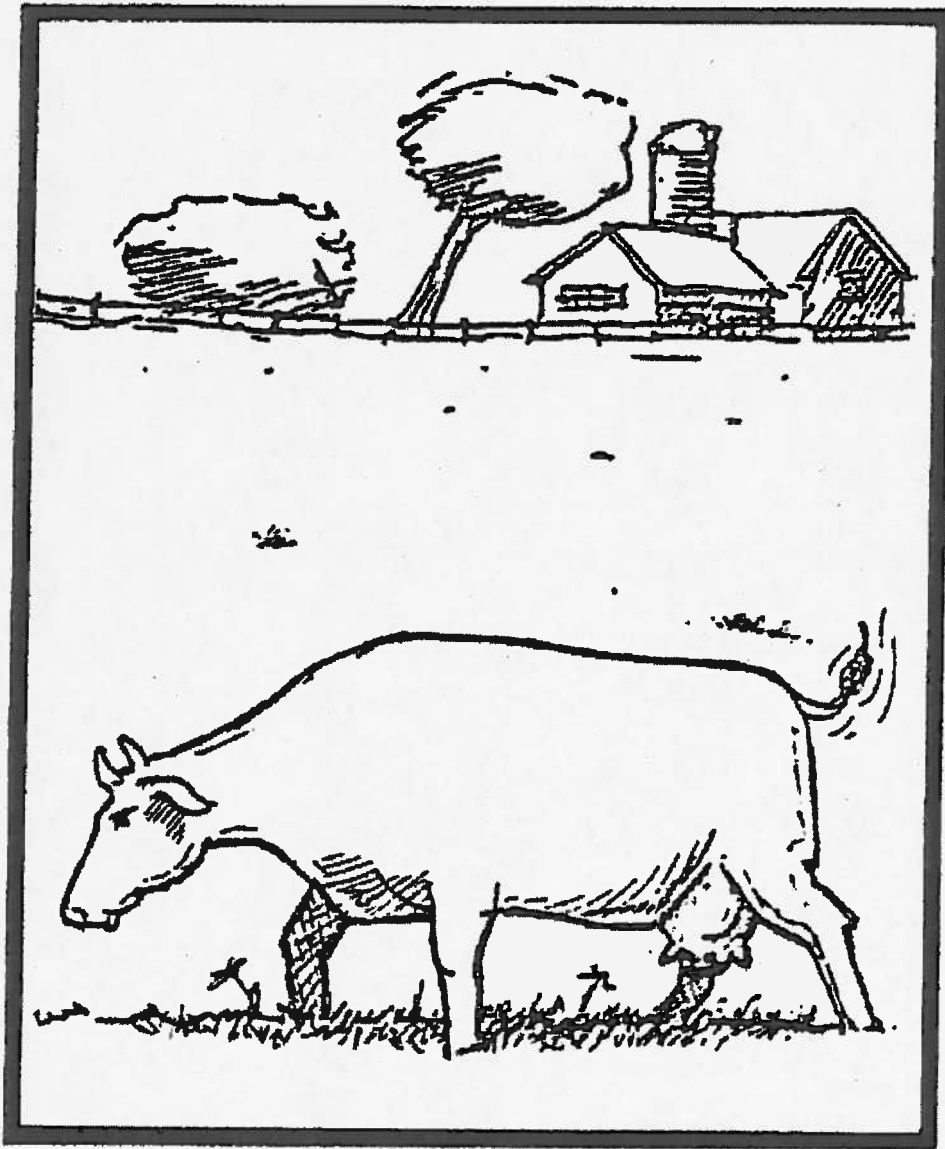


2

1



2

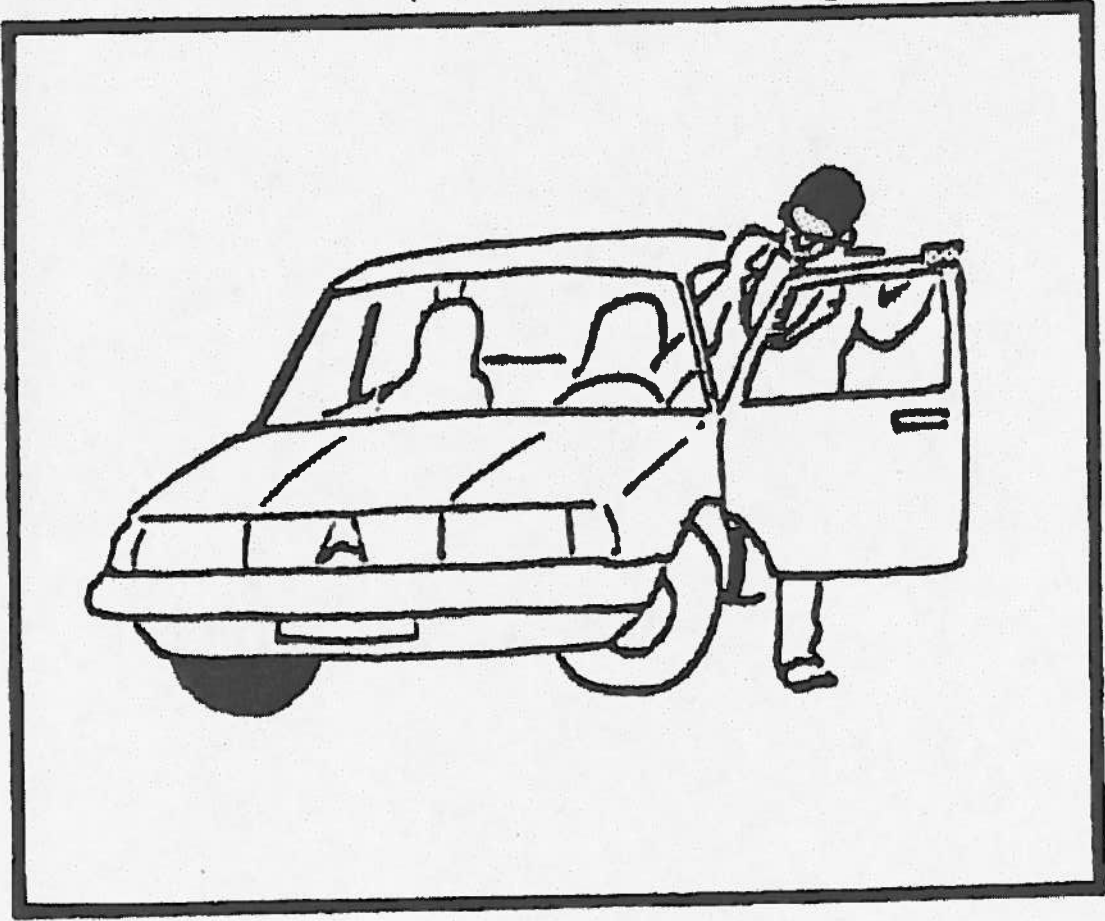


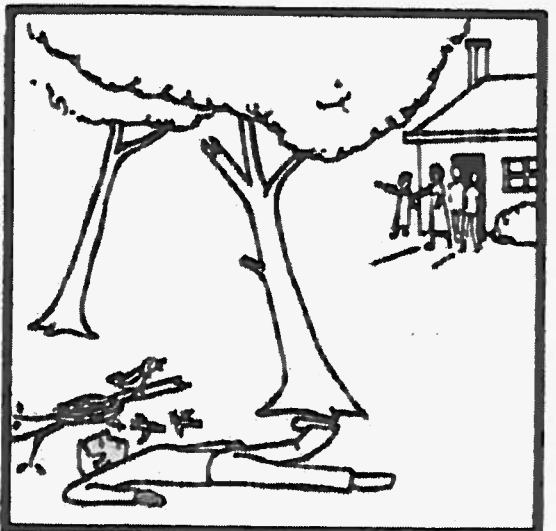
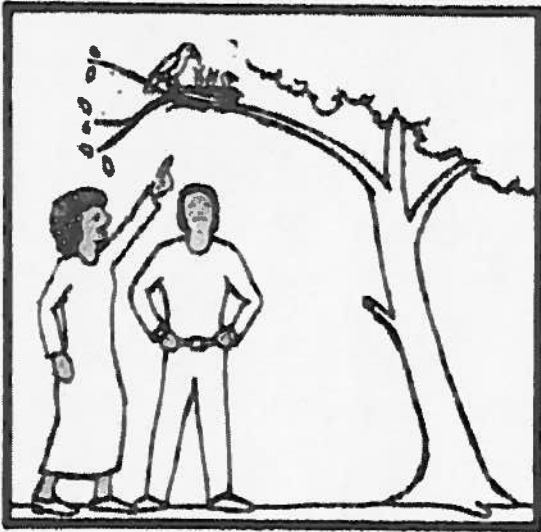
1

2

1

2





Got

Kudho

Diel

Guok

Sum

Ker

Jèdo

Bul

Soyo

Pamo

Nyiri riembo wuoyi

Giluokore

Guok ikayo gi paka

En lori ema ywayo gari

Wuoyi ok dhir nyako

Lori ok ywa gi gari

En guok ema paka kayo

Oriembogi

Nyako idhiro gi wuoyi

Dhako ok nyodh gi wuoyi

Odiechieng' achiel hamisi ne odhi gi guoge e
bungu mako le. Ne giyudo hawi ma gimako
apuoyo ariyo. Bang' duogo dala ne gidhi e chiro
manegiwilo apuoyo gi mogo

Tado

Nono

Homa

Yugi

Mtumba

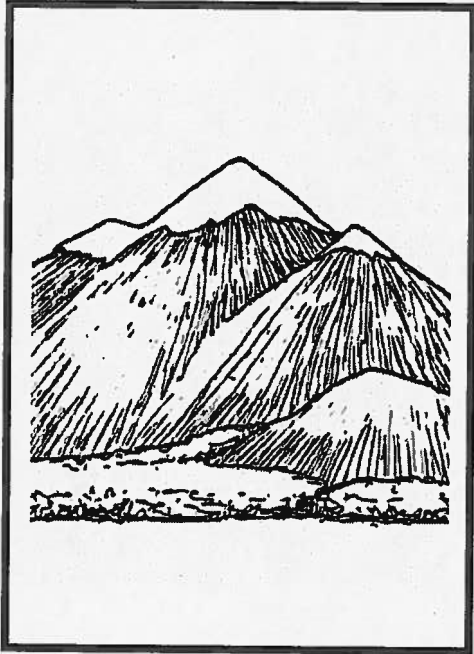
NYALO MAR SOMO WECHE GI NGEYO GIMA WECHE WACHO

Not

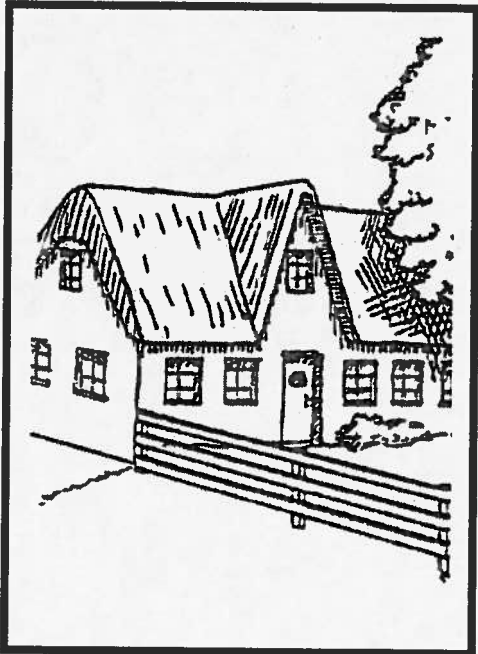
1



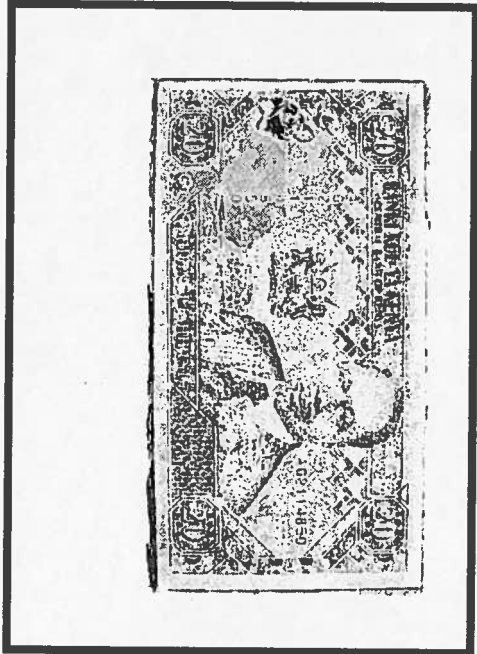
2



3

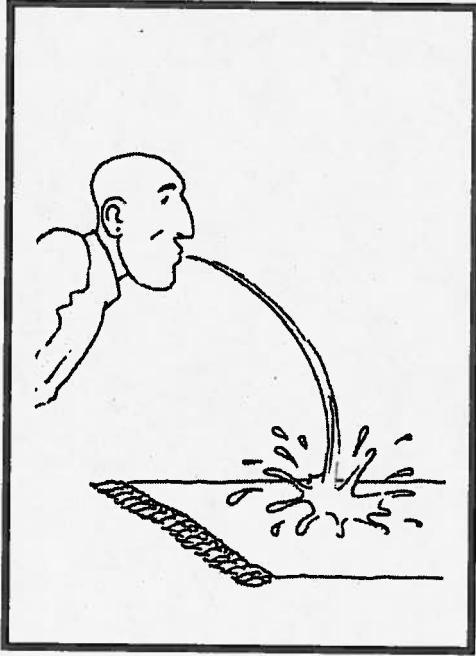


4

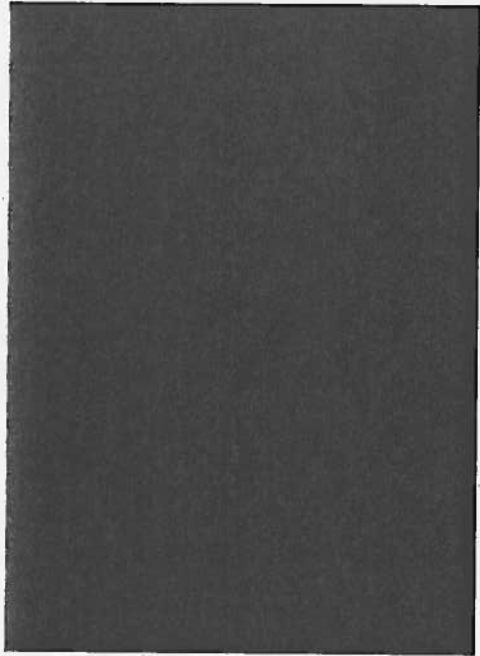


Budho

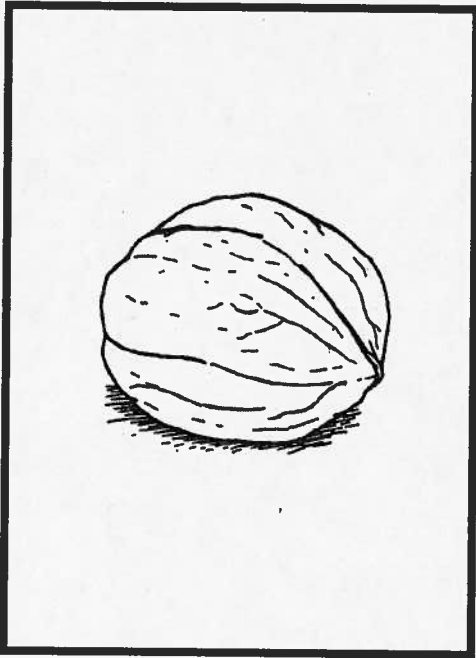
1



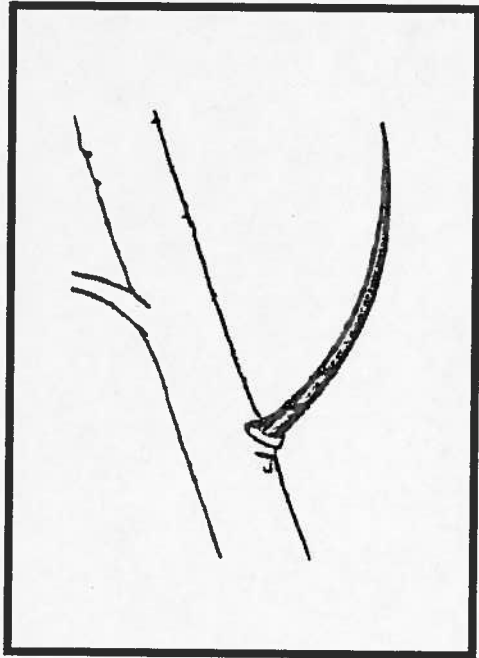
2



3

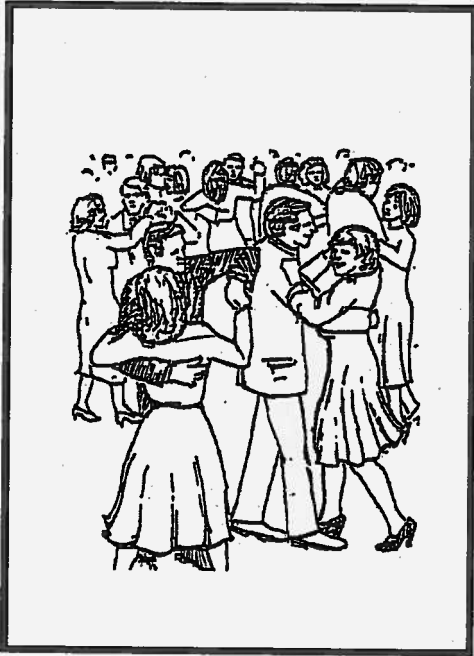


4



Chiel

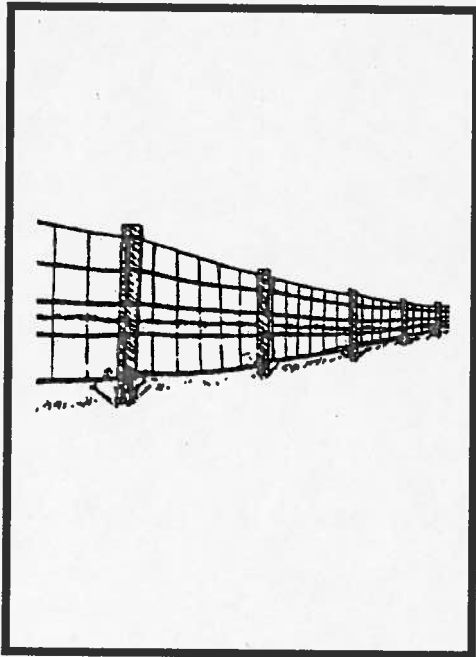
1



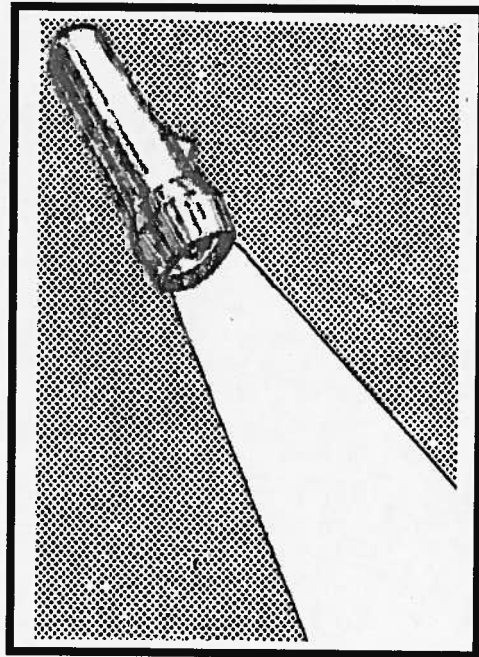
2



3



4



Kuok

1



2



3



4

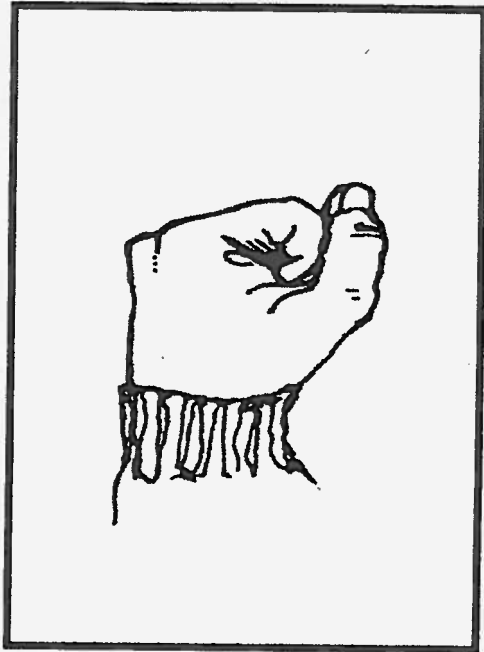


Ngum

1



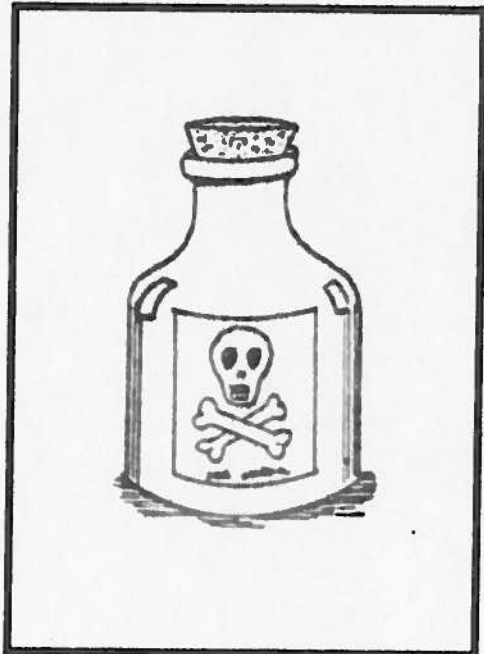
2



3



4



Mer

1



2



3



4



Bedo

1



2



3

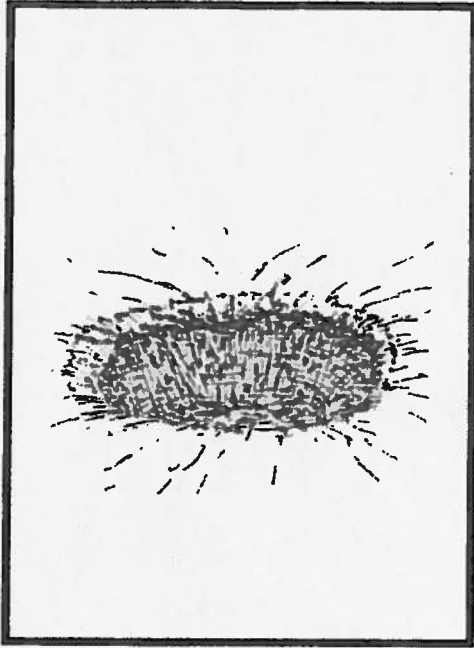


4

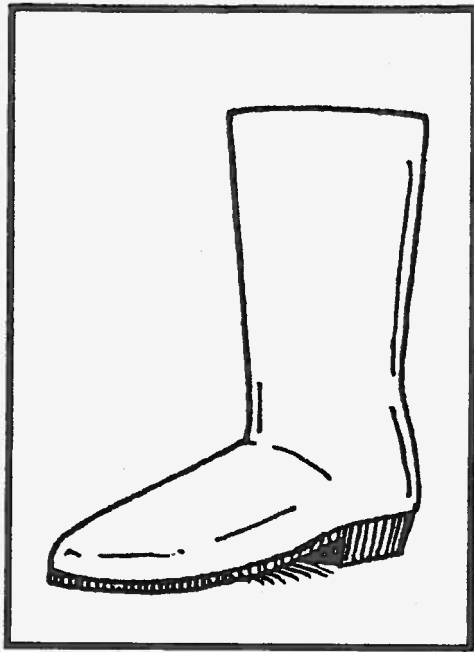


Buk

1



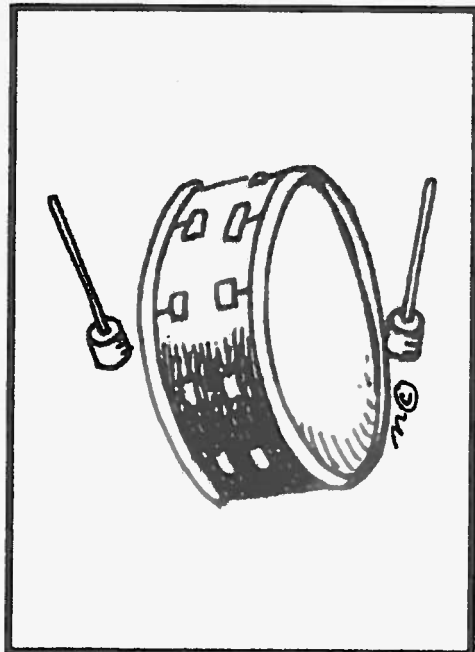
2



3



4

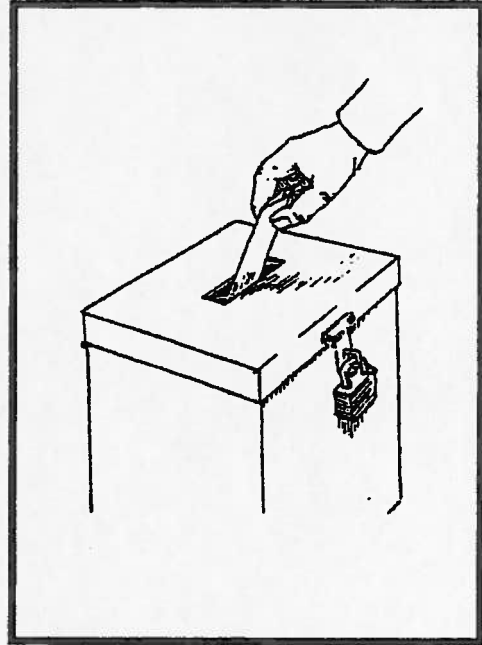


Toyo

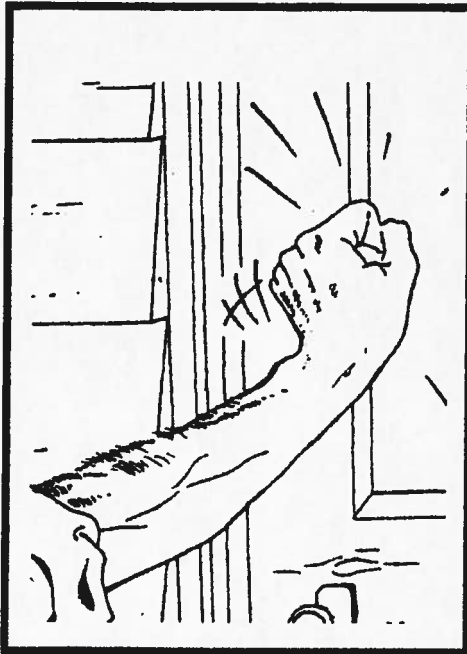
1



2



3

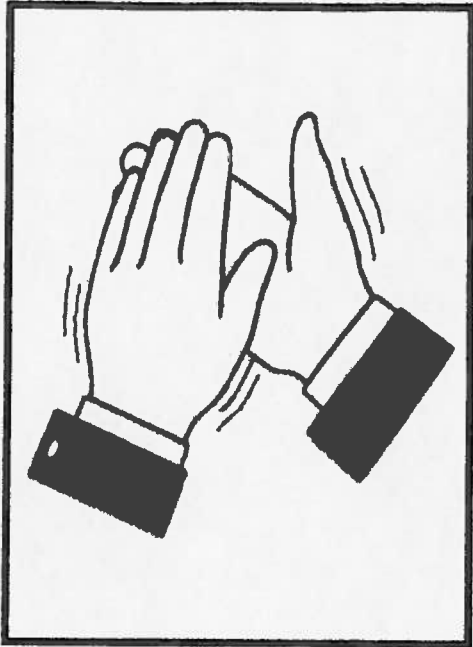


4

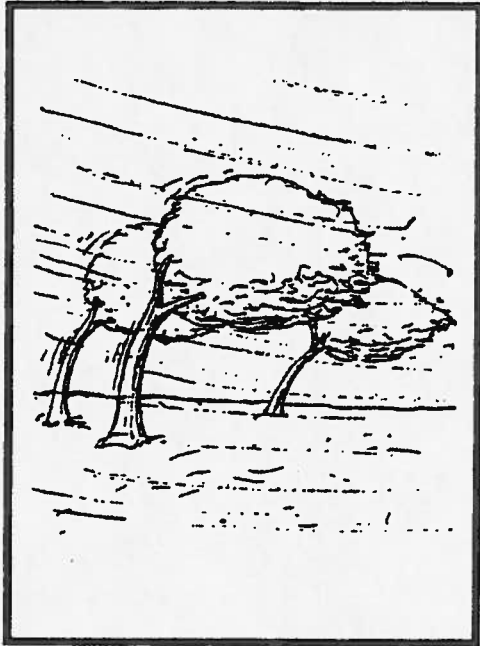


Yamo

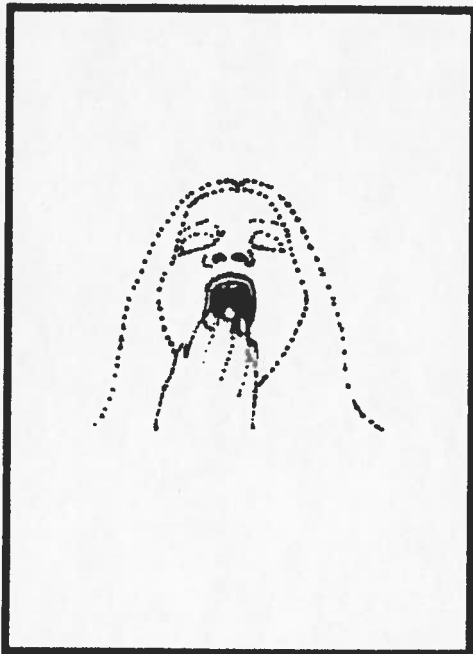
1



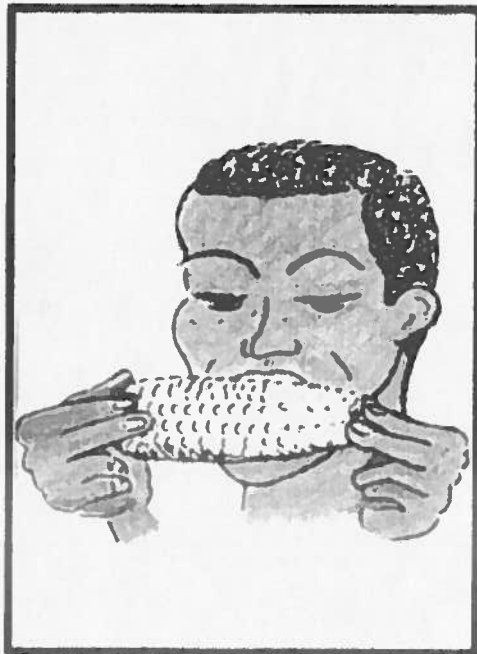
2



3



4



NYALO MAR SOMO WECHÉ GI NGEYO GIMA WECHÉ WACHO

NYIRI RIEMBO WUOYI

1



2



3



4

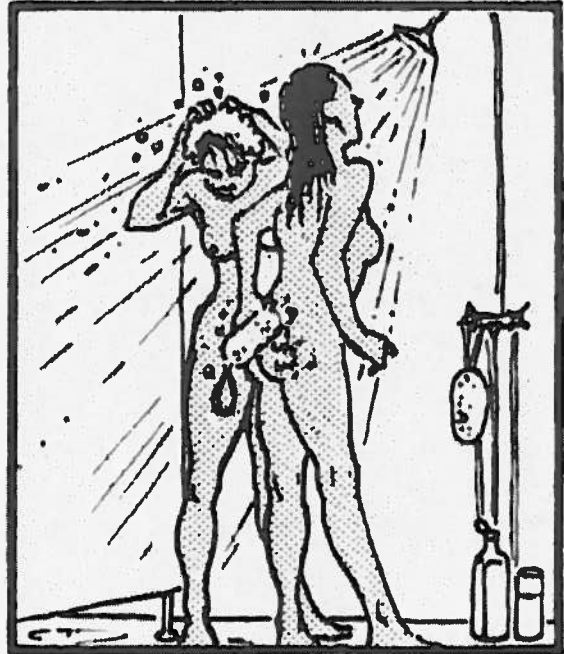


GILUOKORE

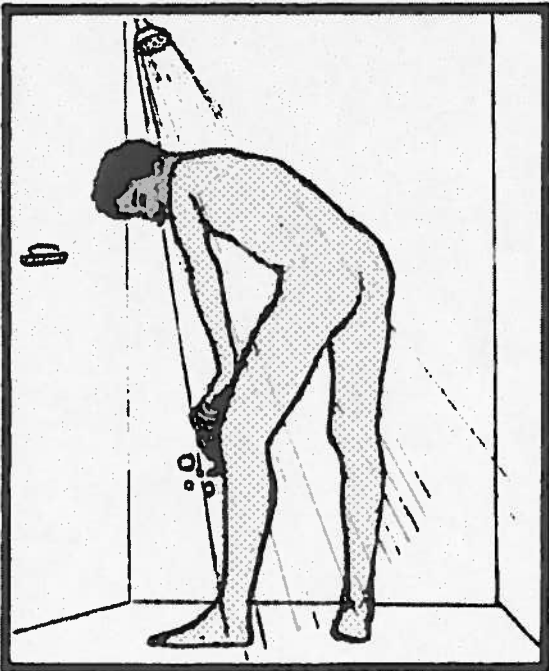
1



2



3

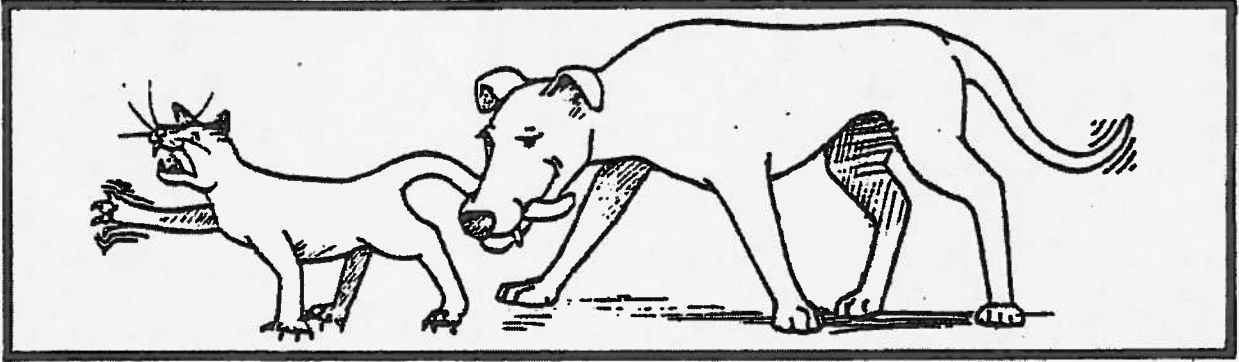


4

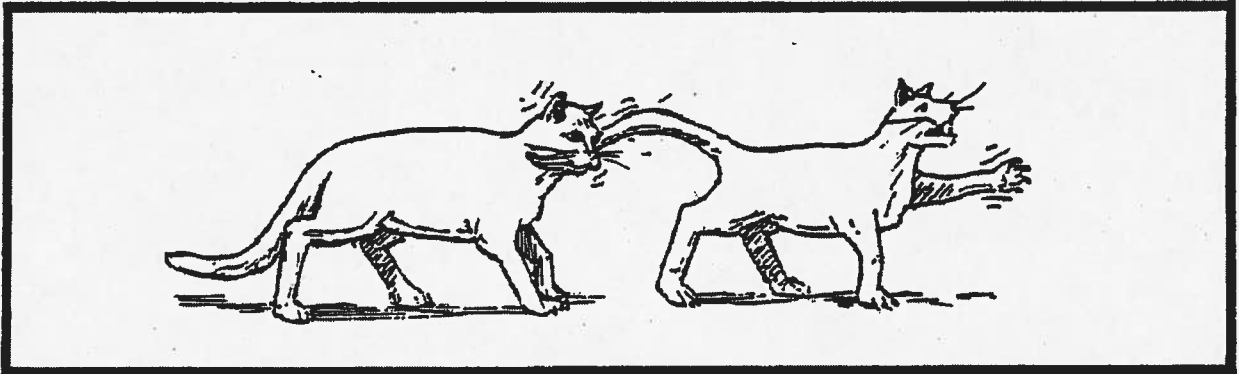


GUOK IKAYO GI PAKA

1



2



3

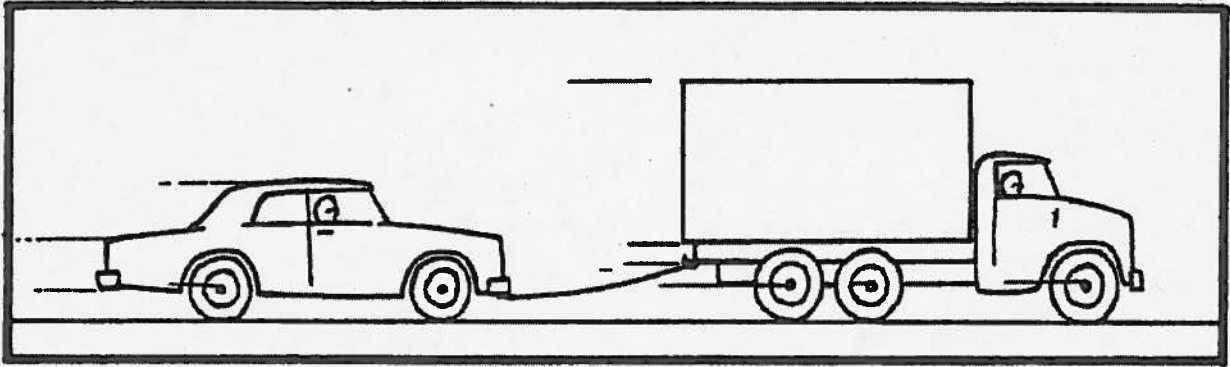


4

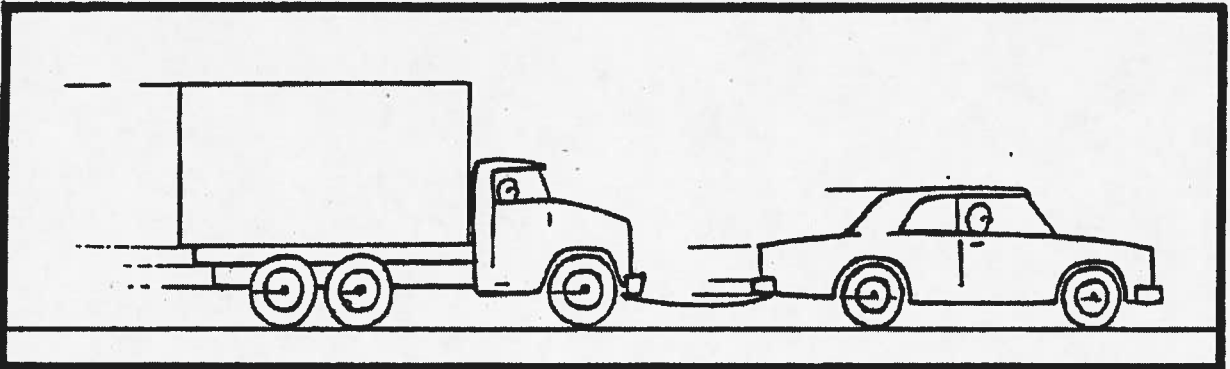


EN LORI EMA YWAYO GARI

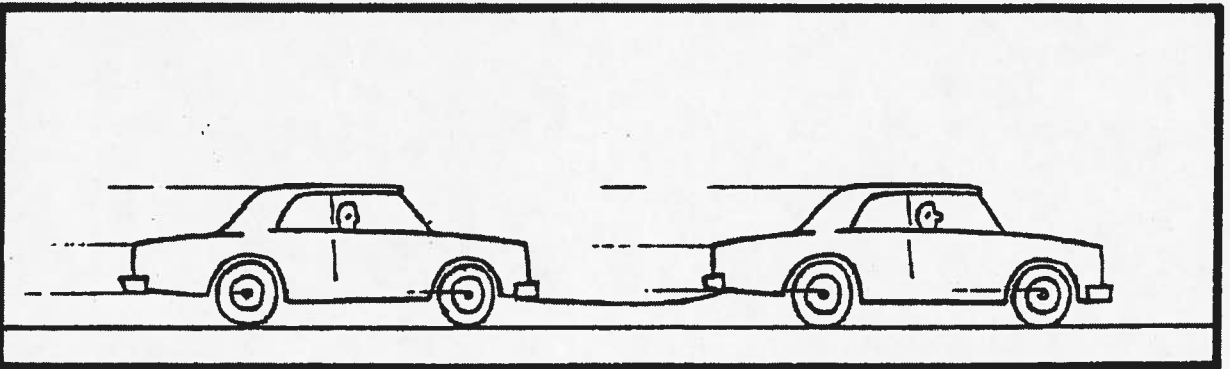
1



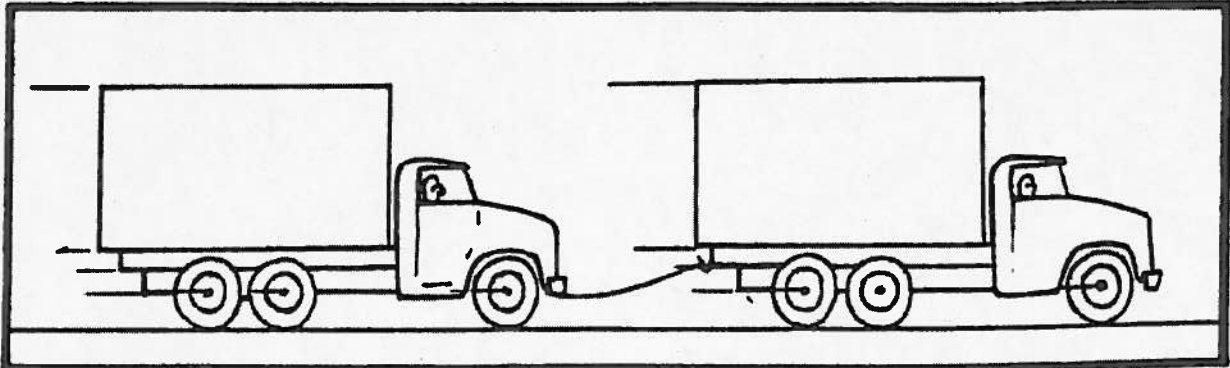
2



3



4



WUOYI OK DHIR NYAKO

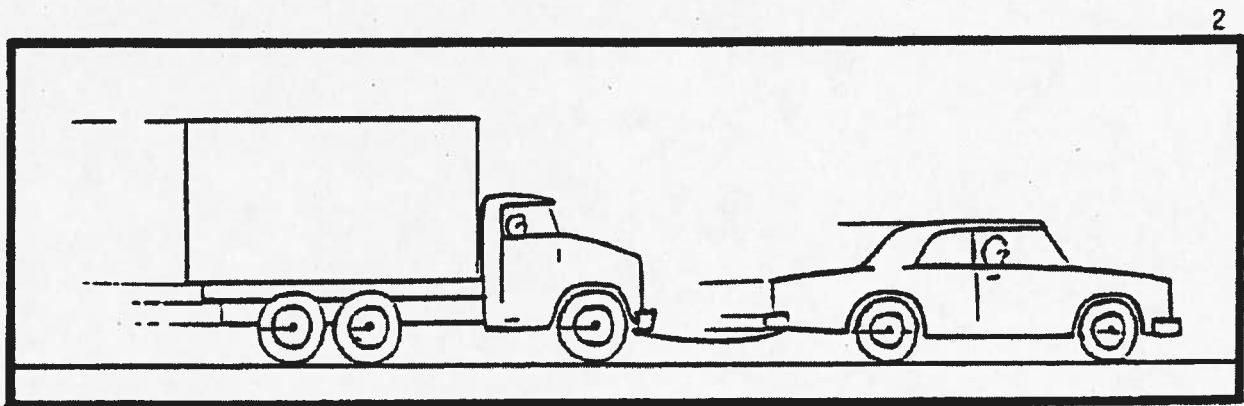
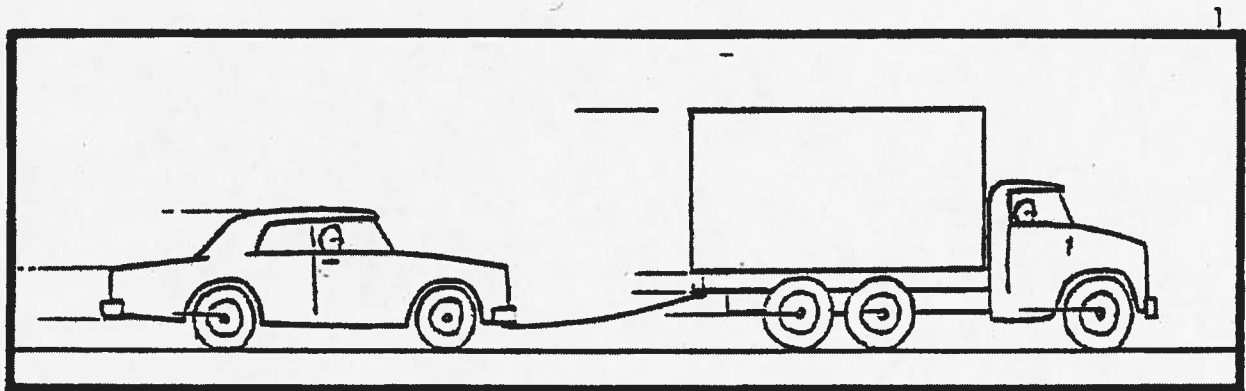
1



2

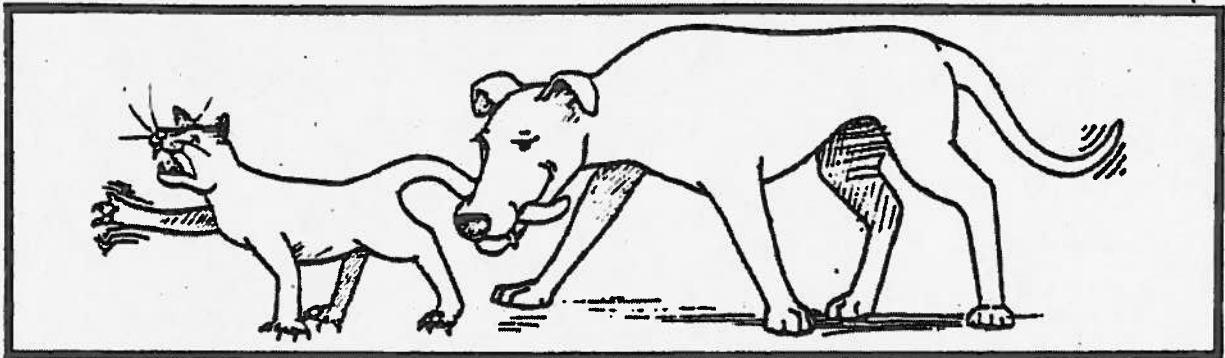


LORI OK YWA GI GARI



EN GUOK EMA PAKA KAYO

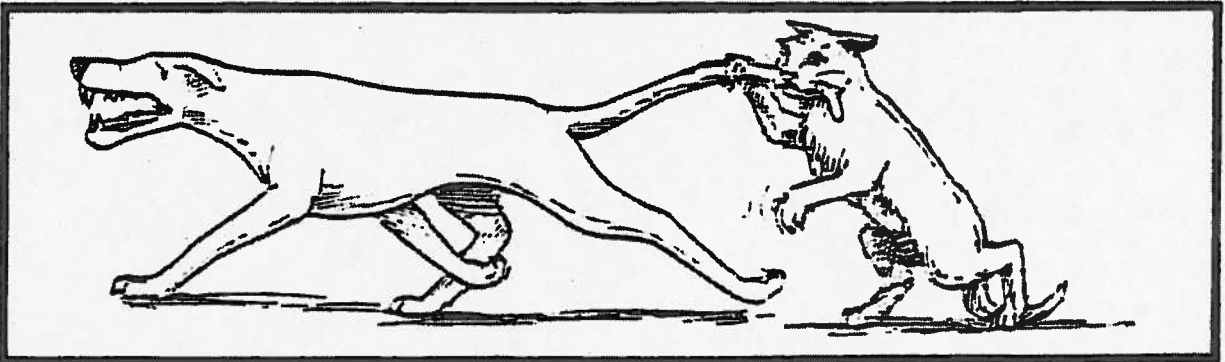
1



2



3



4



ORIEMBOGI

1



2



3



4

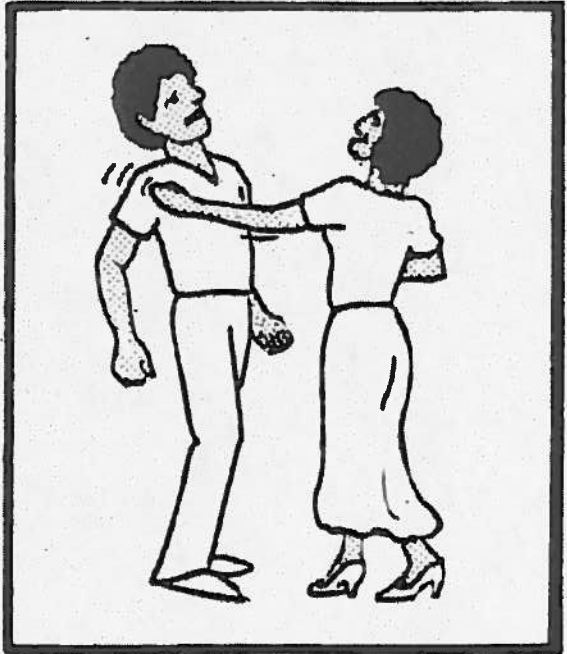


NYAKO IDHIRO GI WUOYI

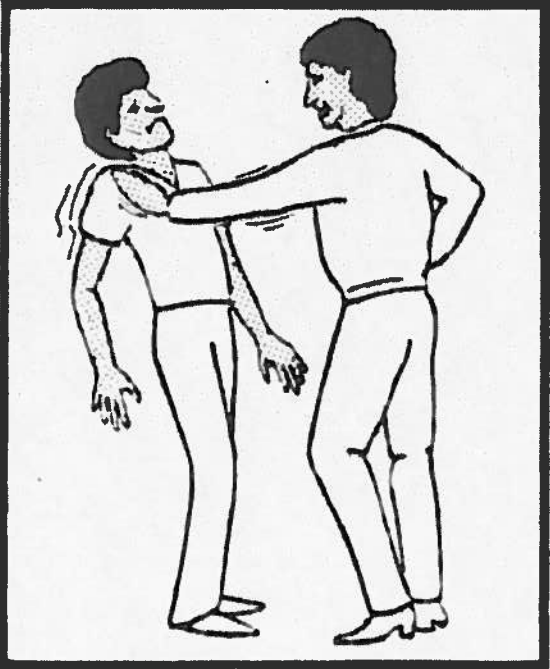
1



2



3



4



DHA KO OK NYODH GI WUOYI

1



2

